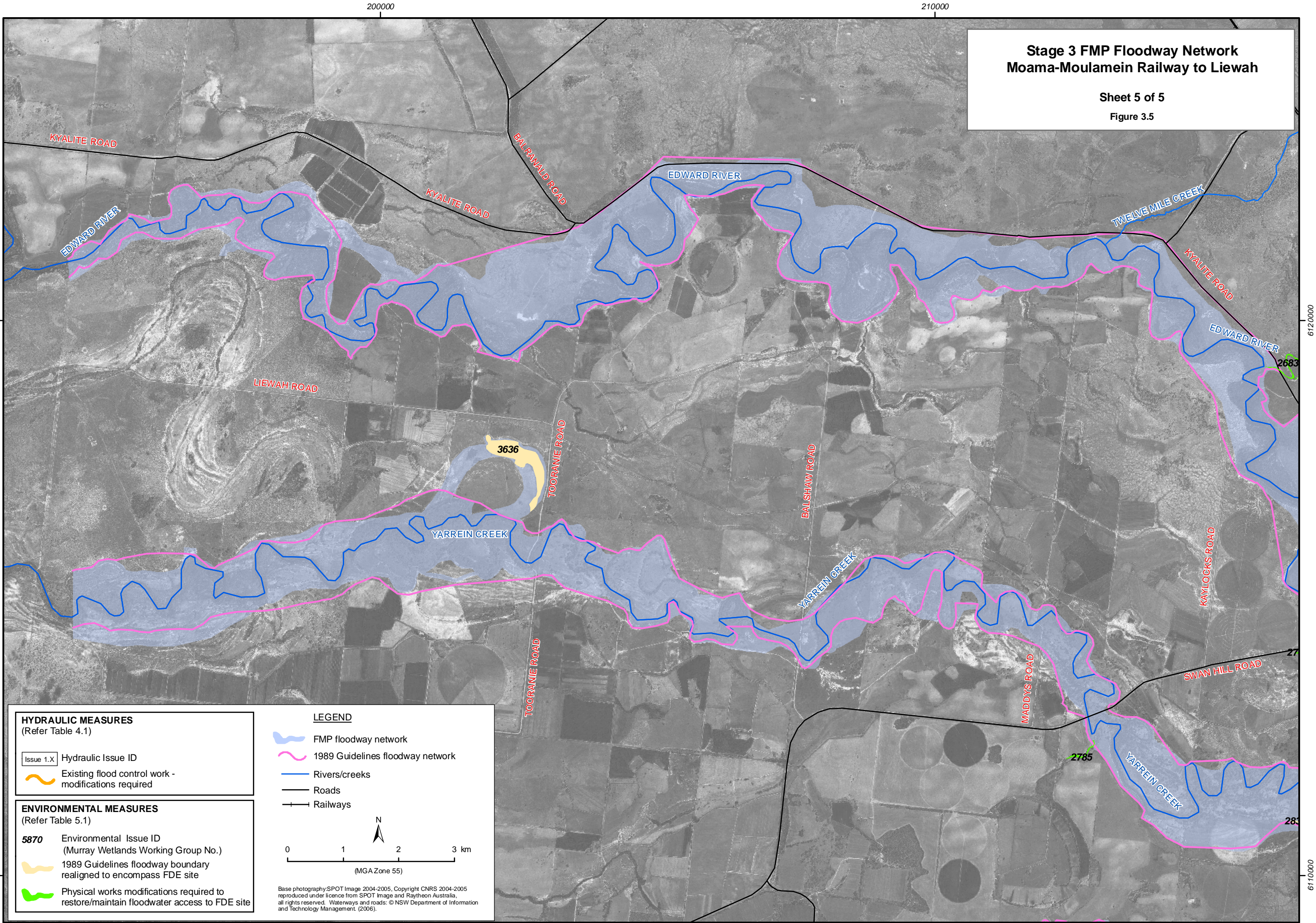



**Stage 3 FMP Floodway Network  
Moama-Moulamein Railway to Liewah**

Sheet 5 of 5



Figure 3.5








**HYDRAULIC MEASURES**  
(Refer Table 4.1)

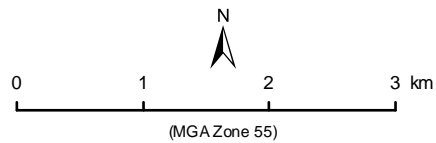
- Issue 1.X Hydraulic Issue ID
-  Existing flood control work - modifications required

**ENVIRONMENTAL MEASURES**  
(Refer Table 5.1)

- 5870 Environmental Issue ID (Murray Wetlands Working Group No.)
-  1989 Guidelines floodway boundary realigned to encompass FDE site
-  Physical works modifications required to restore/maintain floodwater access to FDE site

**LEGEND**

-  FMP floodway network
-  1989 Guidelines floodway network
-  Rivers/creeks
-  Roads
-  Railways



Base photography: SPOT Image 2004-2005. Copyright CNRS 2004-2005 reproduced under licence from SPOT Image and Raytheon Australia, all rights reserved. Waterways and roads: © NSW Department of Information and Technology Management, (2006).