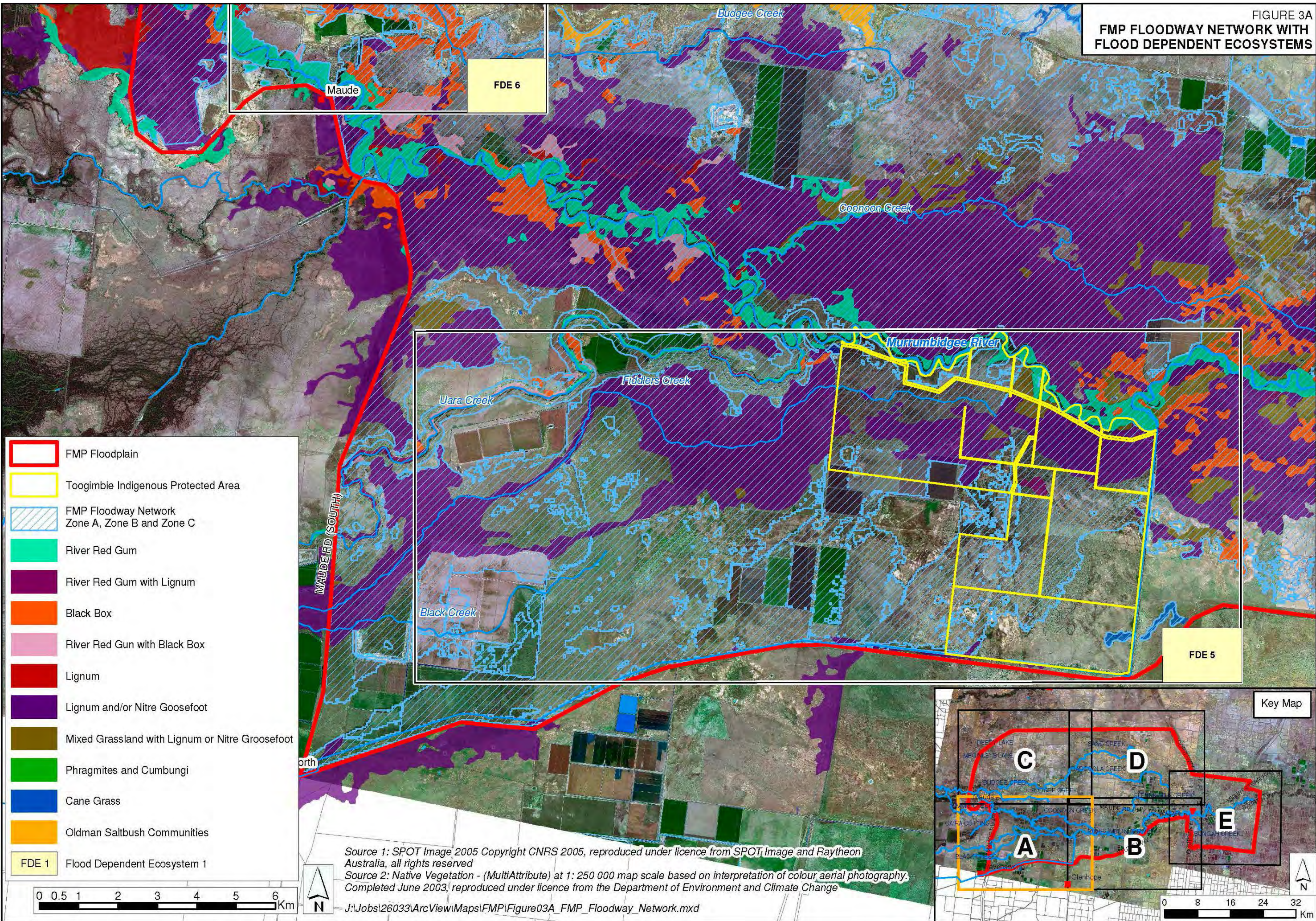


FIGURE 3A
**FMP FLOODWAY NETWORK WITH
 FLOOD DEPENDENT ECOSYSTEMS**

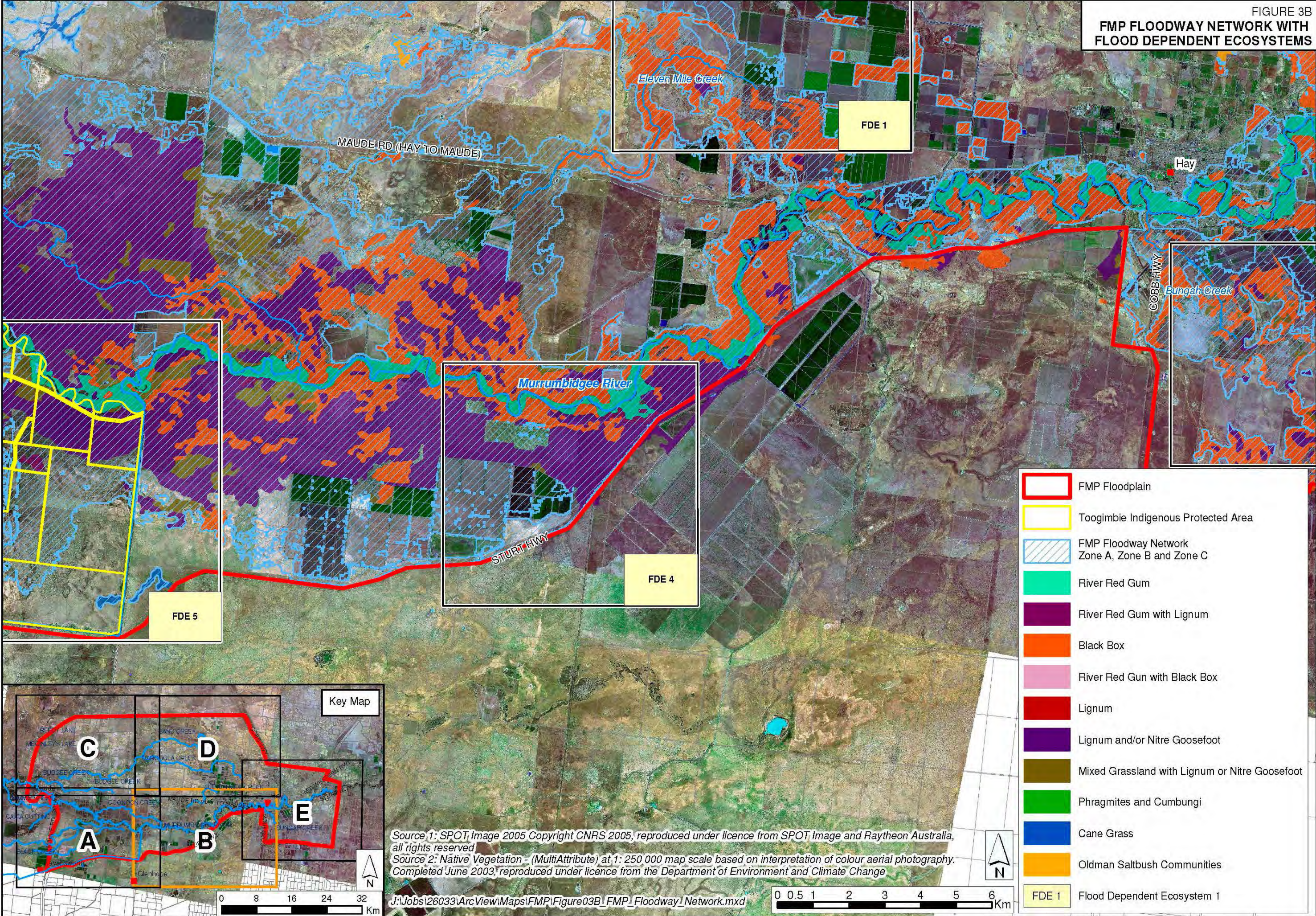


- FMP Floodplain
- Toogimbie Indigenous Protected Area
- FMP Floodway Network
Zone A, Zone B and Zone C
- River Red Gum
- River Red Gum with Lignum
- Black Box
- River Red Gum with Black Box
- Lignum
- Lignum and/or Nitre Goosefoot
- Mixed Grassland with Lignum or Nitre Goosefoot
- Phragmites and Cumbungi
- Cane Grass
- Oldman Saltbush Communities
- FDE 1 Flood Dependent Ecosystem 1

Source 1: SPOT Image 2005 Copyright CNRS 2005, reproduced under licence from SPOT Image and Raytheon Australia, all rights reserved
 Source 2: Native Vegetation - (MultiAttribute) at 1: 250 000 map scale based on interpretation of colour aerial photography. Completed June 2003, reproduced under licence from the Department of Environment and Climate Change

J:\Jobs\26033\ArcView\Maps\FMP\Figure03A_FMP_Floodway_Network.mxd

FIGURE 3B
**FMP FLOODWAY NETWORK WITH
 FLOOD DEPENDENT ECOSYSTEMS**



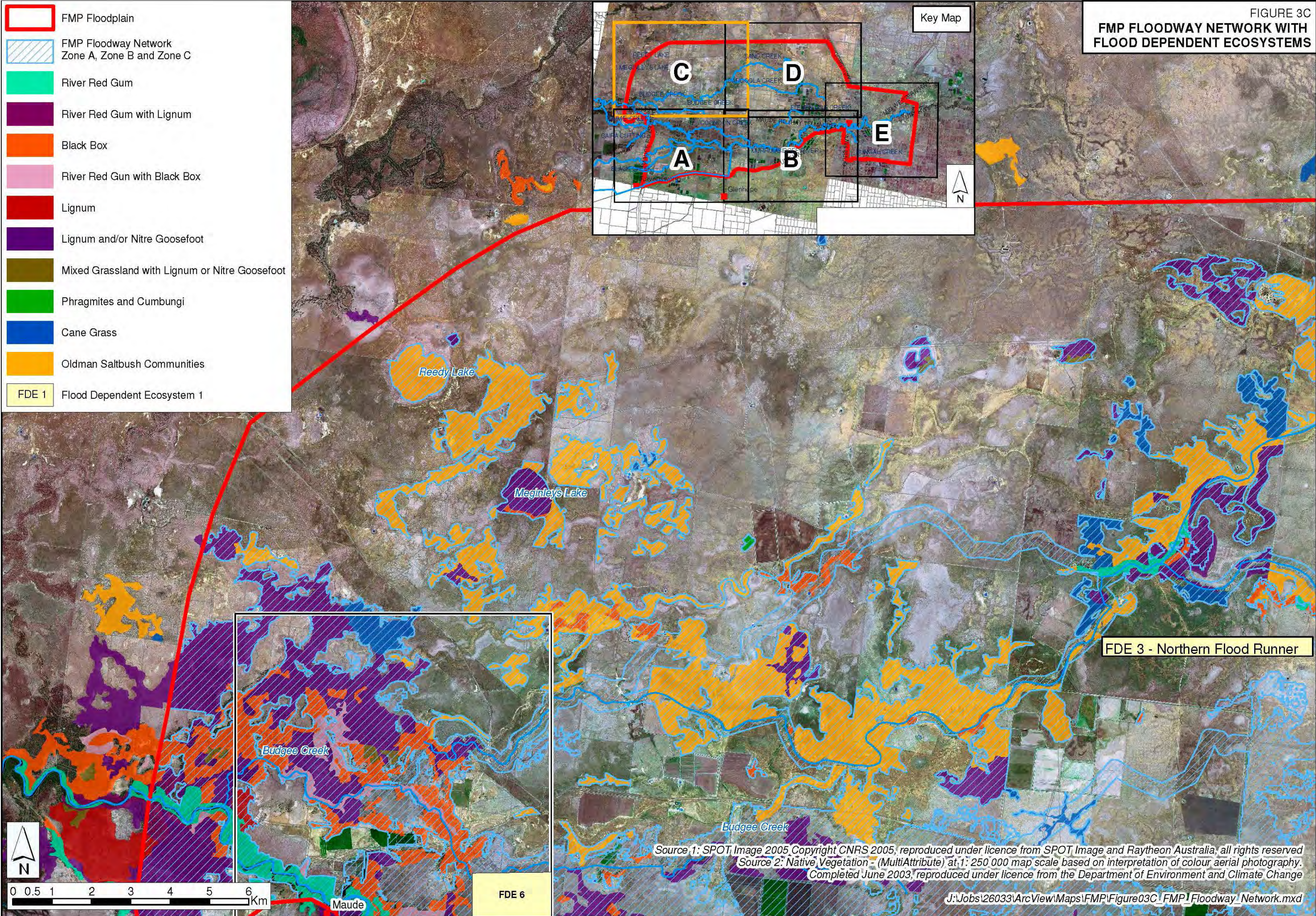
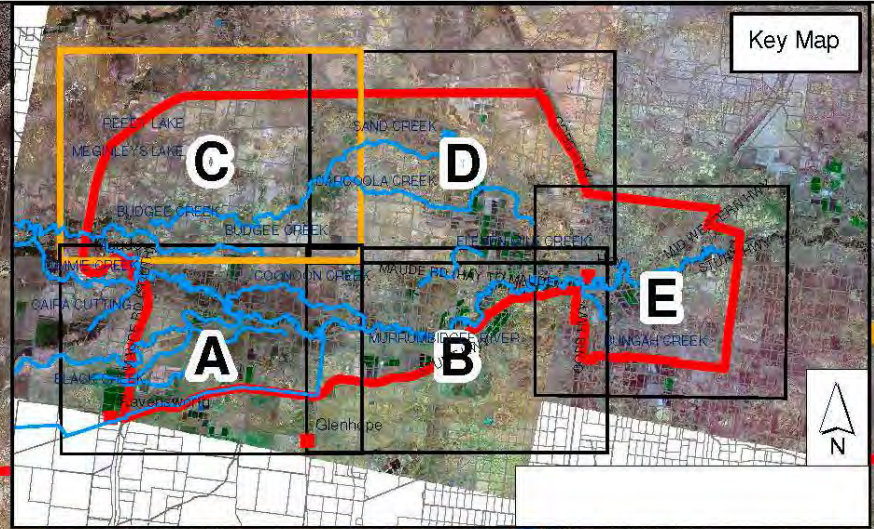
- FMP Floodplain
- Toogimbie Indigenous Protected Area
- FMP Floodway Network Zone A, Zone B and Zone C
- River Red Gum
- River Red Gum with Lignum
- Black Box
- River Red Gum with Black Box
- Lignum
- Lignum and/or Nitre Goosefoot
- Mixed Grassland with Lignum or Nitre Goosefoot
- Phragmites and Cumbungi
- Cane Grass
- Oldman Saltbush Communities
- FDE 1 Flood Dependent Ecosystem 1

Source 1: SPOT Image 2005 Copyright CNRS 2005, reproduced under licence from SPOT Image and Raytheon Australia, all rights reserved
 Source 2: Native Vegetation - (MultiAttribute) at 1: 250 000 map scale based on interpretation of colour aerial photography. Completed June 2003, reproduced under licence from the Department of Environment and Climate Change

J:\Jobs\26033\ArcView\Maps\FMP\Figure03B\FMP_Floodway_Network.mxd

FMP FLOODWAY NETWORK WITH FLOOD DEPENDENT ECOSYSTEMS

-  FMP Floodplain
-  FMP Floodway Network Zone A, Zone B and Zone C
-  River Red Gum
-  River Red Gum with Lignum
-  Black Box
-  River Red Gum with Black Box
-  Lignum
-  Lignum and/or Nitre Goosefoot
-  Mixed Grassland with Lignum or Nitre Goosefoot
-  Phragmites and Cumbungi
-  Cane Grass
-  Oldman Saltbush Communities
-  FDE 1 Flood Dependent Ecosystem 1



Source 1: SPOT Image 2005 Copyright CNRS 2005, reproduced under licence from SPOT Image and Raytheon Australia, all rights reserved
 Source 2: Native Vegetation - (MultiAttribute) at 1: 250 000 map scale based on interpretation of colour aerial photography. Completed June 2003, reproduced under licence from the Department of Environment and Climate Change

J:\Jobs\26033\ArcView\Maps\FMP\Figure03C\FMP_Floodway_Network.mxd