

Upper Namoi Zone 8 Groundwater Source

Introduction

This report is a summary of water accounts, volume pumped and groundwater levels for the Upper Namoi Zone 8 Groundwater Source for the period 1 July 2020 to 30 June 2021. It will be updated regularly.

For detailed information of the hydrogeology, management and past long-term water level behaviour of this water source refer to the Groundwater Resource Description Report for the Namoi Alluvial Groundwater Sources:

www.industry.nsw.gov.au/__data/assets/pdf_file/0017/230804/Namoi-Alluvium-WRP-resource-description.pdf

Description

The Upper Namoi Zone 8 Groundwater Source is located within the Namoi River catchment. The alluvium extends approximately 35 km north from Pine Ridge to Breeza (**Figure 1**).

The Upper Namoi Zone 8 Groundwater Source is made up of sediments associated with the Mooki River and its tributaries, comprised of clay, silt, sand and gravel.

Water resource management

Water sharing plan

The Upper Namoi Zone 8 Groundwater Source is managed by the rules defined in the Water Sharing Plan for the Namoi Alluvial Groundwater Sources 2020.

This water sharing plan is available for viewing on the Department of Planning, Industry and Environment website at: www.industry.nsw.gov.au/water/plans-programs/water-sharing-plans/status/namoi-region

Basic rights

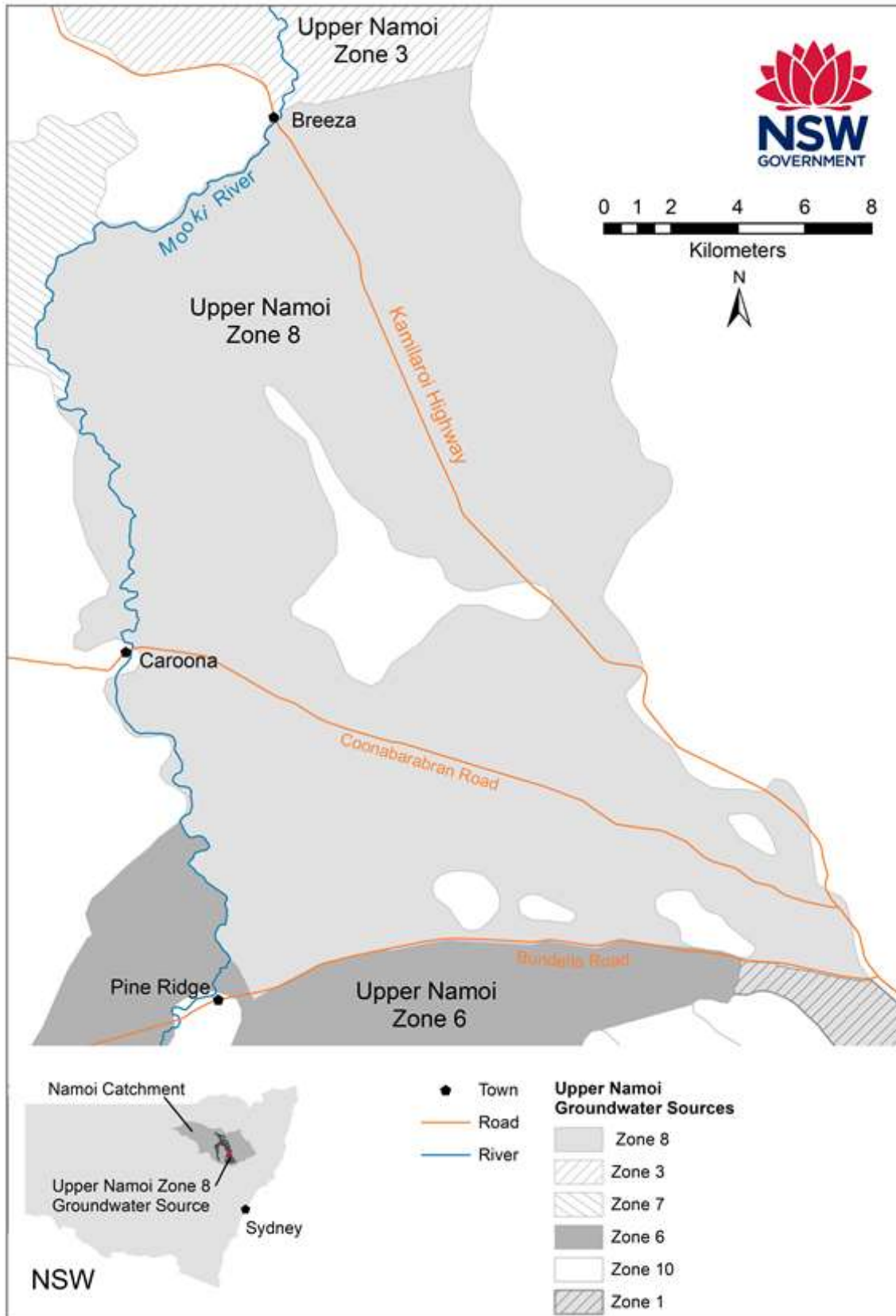
Basic landholder rights are available in this groundwater source for domestic and stock watering requirements. While landholders don't need an access licence to take water for domestic and stock purposes from groundwater below their property, the bore must be authorised by WaterNSW.

The volume of water set aside in the water sharing plan for basic landholder rights is 114 megalitres (ML).

An approval holder is responsible for monitoring water quality from the bore to ensure it is suitable for its intended purpose for the duration of the approval. Inherent water quality and land use activities may make the water in some areas unsuitable for use.

Water from the groundwater sources should not be used without first being tested and, if necessary, appropriately treated to ensure it is fit for purpose. Such testing and treatment are the responsibility of the water user.

Figure 1: Location map



Groundwater access licences

Groundwater access licence share components for 2020 - 2021 are presented in **Table 1**.

Table 1: Upper Namoi Zone 8 Groundwater Source share component 30 June 2021

Access Licence Category	Number of Licences	Total Volume
Aquifer ¹	62	16,122
Local Water Utility ²	1	50

¹ Megalitres per unit share

² Megalitres/year (ML)

Extraction limit

All groundwater sharing plans have rules to manage extraction in a water source to the long-term average annual extraction limit.

The extraction limit for Upper Namoi Zone 8 Groundwater Source is 16,114 ML/year. Extraction in the Upper Namoi Zone 8 Groundwater Source is not compliant if the **5 years** average annual extraction is more than **105%** of the extraction limit (known as the compliance trigger).

If average extraction exceeds the compliance trigger, then the available water determination made for aquifer access licences for the following water year, may be reduced by an amount that would return subsequent total water extraction to the extraction limit.

Information on tracking groundwater extraction against extraction limit for the groundwater source, including the likelihood of compliance being triggered in the current water year can be found at: www.industry.nsw.gov.au/water/allocations-availability/tracking-groundwater

For each inland groundwater source, the dashboard shows for the current water year:

- Volume that if extracted will reach the compliance trigger (in ML, calculated annually).
- Volume remaining to be extracted before reaching the compliance trigger (in ML, calculated throughout the year).
- The likelihood that access to groundwater may be reduced in the next water year.

Note: the information on the dashboard is limited by the extraction data available at the time.

Available water

Total water availability in a water year is controlled by the available water determinations credited to an access licence account and the carryover rules that dictate the allowable volume to be brought forward from one year to the next.

Total available water for use is controlled by the annual account usage limits, which define the maximum volume of allocated water that can be taken in that water year. The rules and limits that are applicable to the Upper Namoi Zone 8 Groundwater Source are provided in **Table 2**.

Table 2: Upper Namoi Zone 8 Groundwater Source access licence account rules

Access Licence Category	Carryover Limit	Annual Use Limit	Maximum AWD
Aquifer	2 ML/share	2 ML/share	1 ML/share
Local Water Utility	0%	100%	100%

The maximum amount of water that can be debited from an aquifer access licence account in a water year can't exceed 2 ML per unit share component (annual use limit), plus any allocation transferred in (temporary trade), minus any allocation transferred out. This means that metered extraction plus transfers out can't exceed 200% of the of share component, unless water is transferred in.

Total account water for period 2012-13 to 2021-2022 is displayed in

Figure 2, showing the proportion available for use and what is not available for use in a year. Total yearly extraction is also displayed.

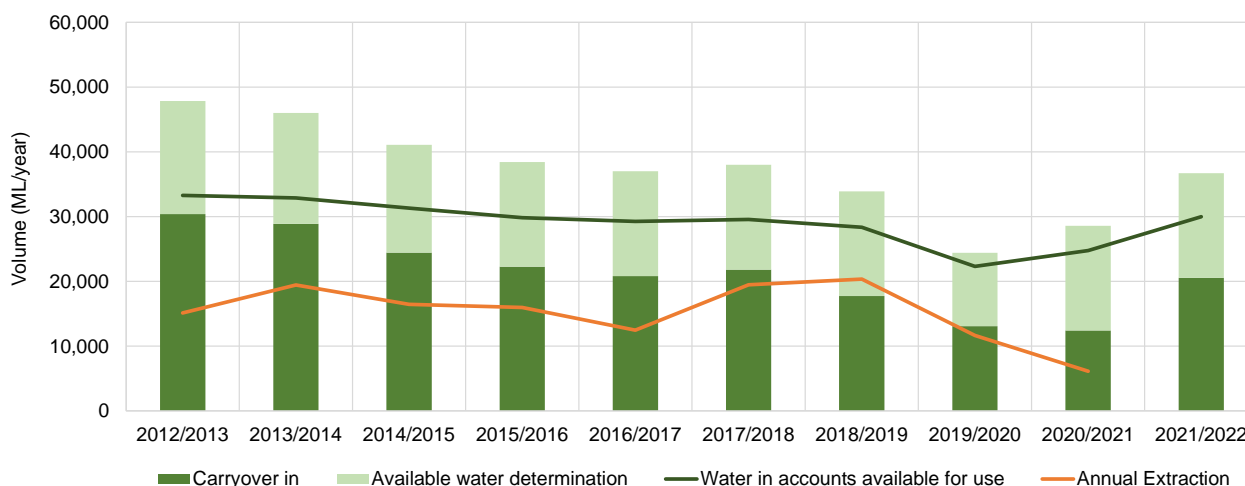
Note: all access licence categories have been combined in

Figure 2.

The access licence account information for the Upper Namoi Zone 8 Groundwater Source on 1 July 2021 is summarised below:

- Carryover In: 20,537 ML.
- Available water determination: 16,172 ML.
- Total water in account: 36,709 ML.
- Total water available for use: 29,993 ML.

Figure 2: Account water availability and usage summary for Upper Namoi Zone 8 Groundwater Source



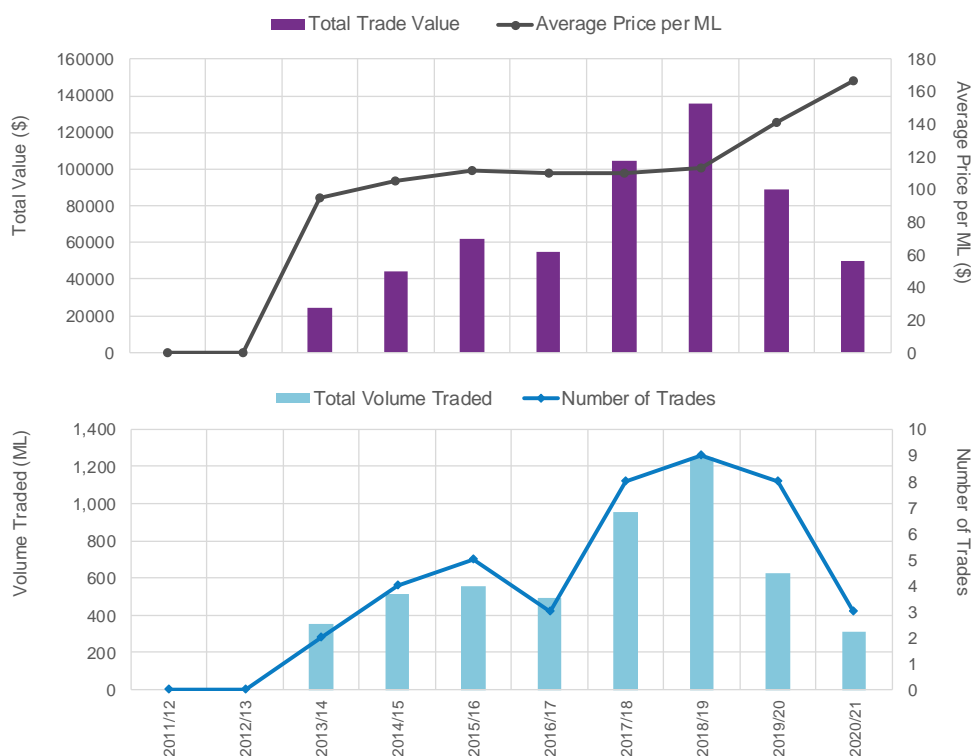
Groundwater trading

Trades are permitted within, but not between Upper Namoi Zone 8 and any other groundwater source. Trades to Upper Namoi Zone 10 groundwater source are permitted, but subject to conditions and assessment.

Allocation assignments (temporary trade)

Trading statistics for the Upper Namoi Zone 8 Groundwater Source are illustrated in **Figure 3**, excludes trades for less than \$1 per megalitre. The average value paid per megalitre in 2020-21 was \$166.67, while the maximum value was \$200 per megalitre.

Figure 3: Upper Namoi Zone 8 Groundwater Source temporary trade statistics



Further information on water licences, approvals, water trade, water dealings and other matters related to water entitlements in NSW, can be found on the NSW Water Register at: waterregister.waternsw.com.au/water-register-frame

Bores

There are approximately 372 registered bores across the Upper Namoi Zone 8 Groundwater Source (**Figure 4**). The majority of these bores are used for stock and domestic purposes (Basic Landholder Rights). There is also significant use of groundwater for irrigation (**Table 3**).

Most production bores produce supply around 300 ML/year (**Figure 5**).

Table 3: Approximate number of licensed bores in Upper Namoi Zone 8 Groundwater Source (at June 2021)

Groundwater Source	Registered Bore Purpose		
	Basic Landholder Rights	Production	Local Water Utility
Upper Namoi Zone 8	222	149	1

Water level monitoring

WaterNSW monitors groundwater levels at 104 monitoring bores at 52 sites in the Upper Namoi Zone 8 Groundwater Source (**Figure 6**). At most monitoring sites there are two or more pipes monitoring different depths. The depth monitored by each pipe reflects the depth where the casing is slotted to allow groundwater entry into the pipe.

A hydrograph is a plot of groundwater level or pressure from a monitoring bore over time. A representative sample of hydrographs from monitoring bores have been selected and are presented in **Figure 7** to **Figure 10**.

Data for the monitored bores, as well as private bore information, can be obtained from the WaterNSW real time data portal (realtime.data.waternsw.com.au/). Data is also available for two of the groundwater monitoring sites in real-time via telemetry.

You can also request information via: Customer.Helpdesk@waternsw.com.au

Figure 4: Upper Namoi Zone 8 Groundwater Source registered bores

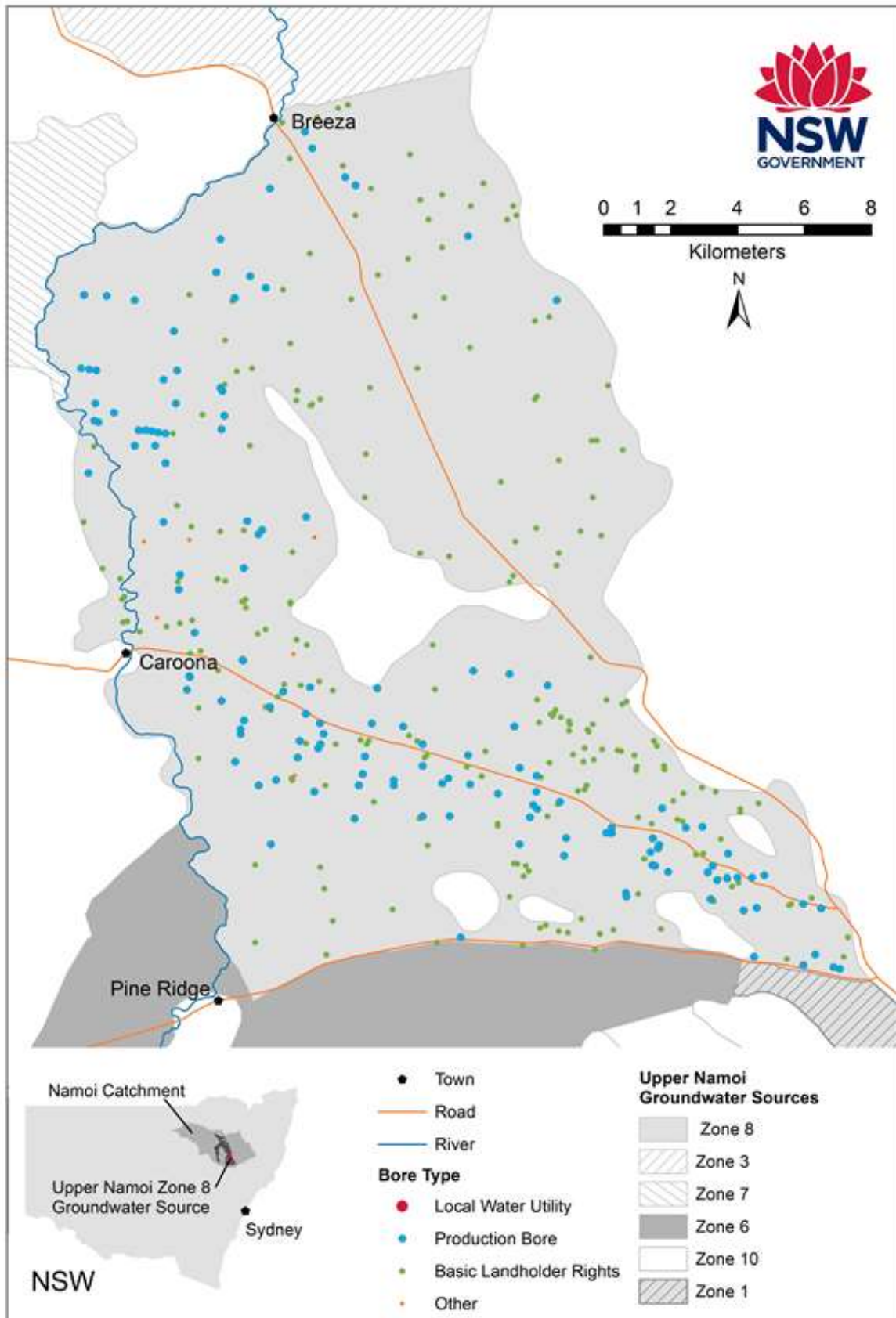


Figure 5: Upper Namoi Zone 8 Groundwater Source water supply bores and distribution of extraction

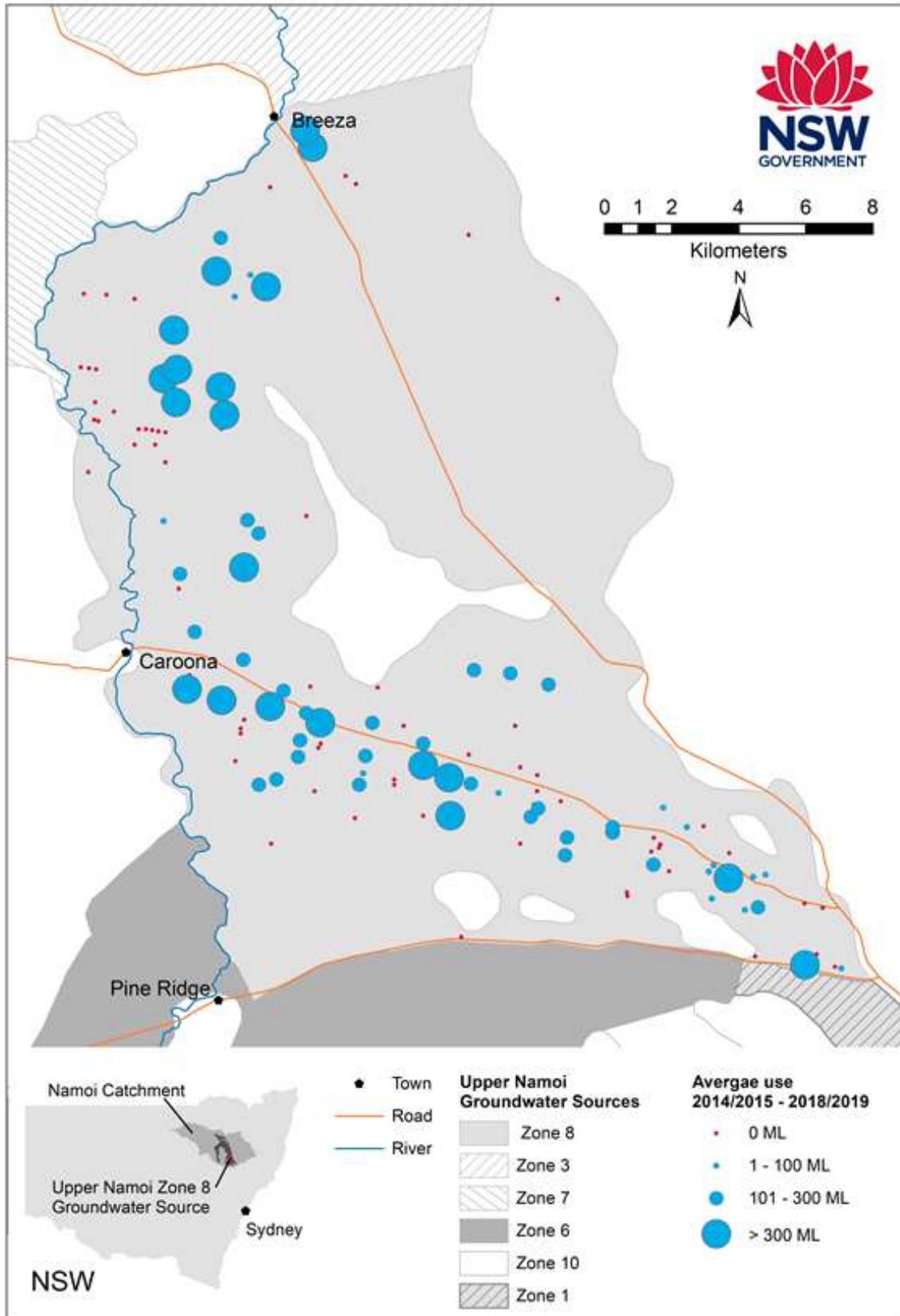


Figure 6: Upper Namoi Zone 8 Groundwater Source monitoring bore sites

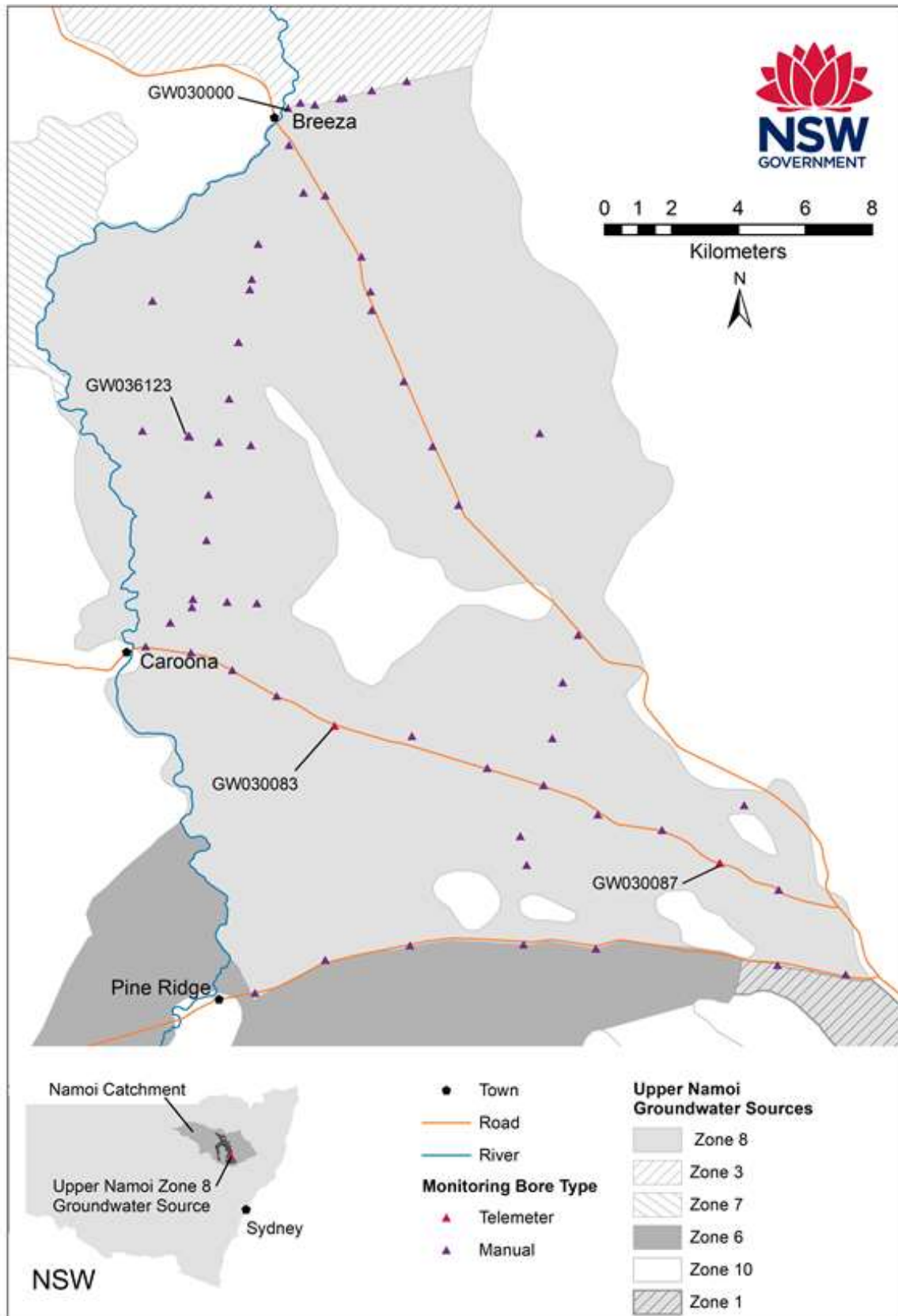


Figure 7: Hydrograph for monitoring bore GW030000

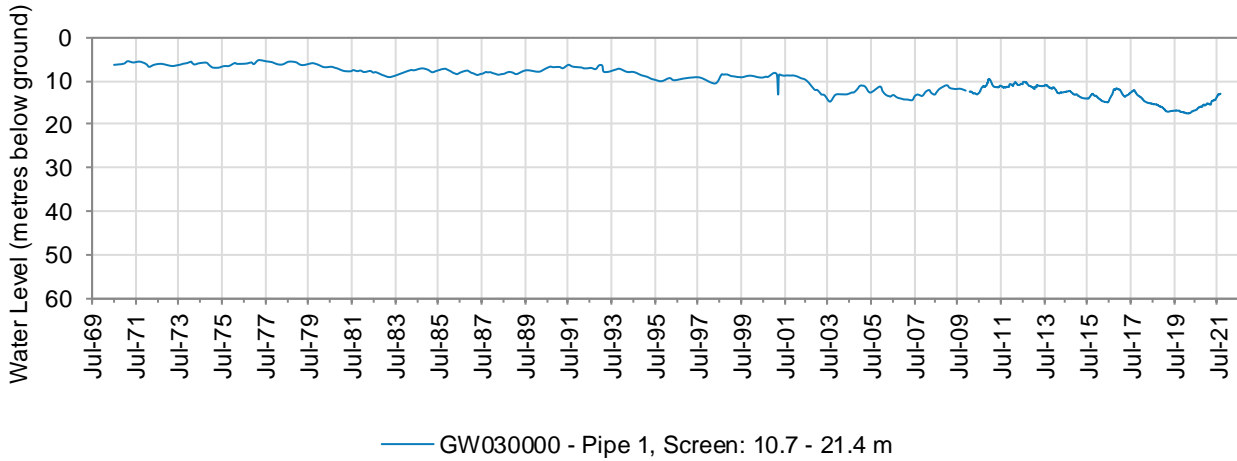


Figure 8: Hydrograph for monitoring bore GW030083

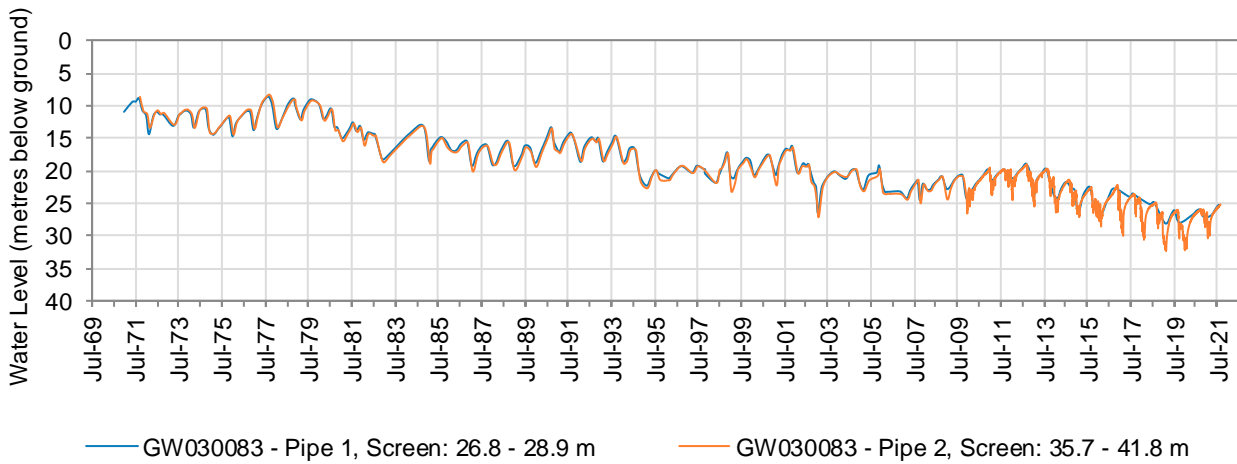


Figure 9: Hydrograph for monitoring bore GW030087

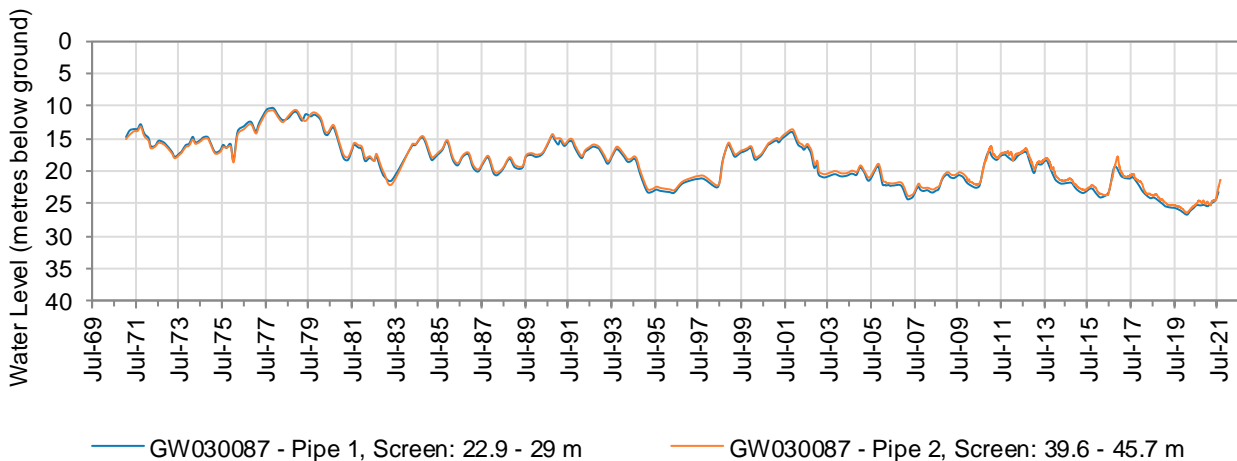
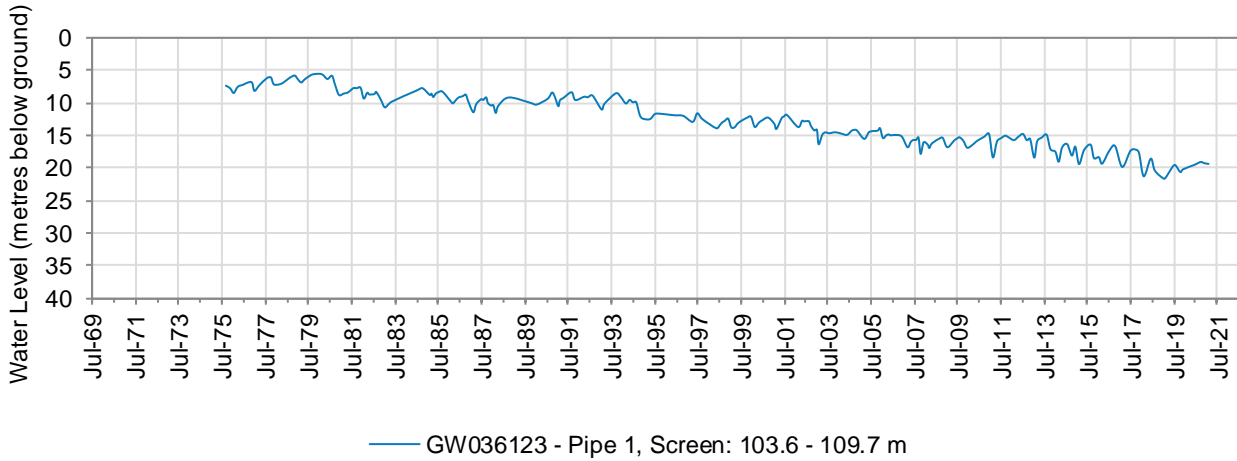


Figure 10: Hydrograph for monitoring bore GW036123



© State of New South Wales through Department of Planning, Industry and Environment 2021 The information contained in this publication is based on knowledge and understanding at the time of writing (November 2021). However, because of advances in knowledge, users should ensure that the information upon which they rely is up to date and to check the currency of the information with the appropriate departmental officer or the user's independent adviser.