

NSW Land and Housing Corporation

Local area analysis

North Sydney

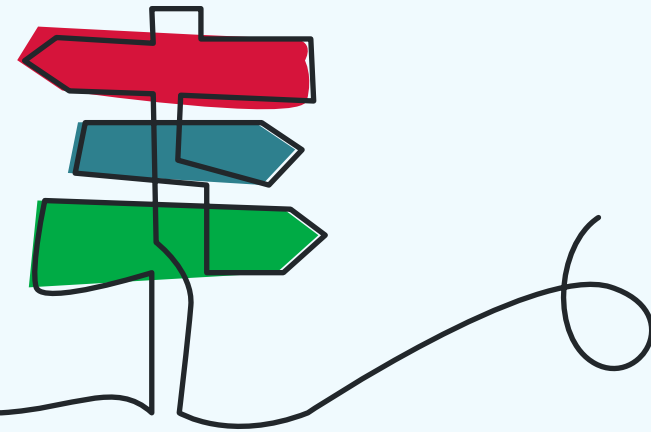


We're innovating housing to deliver more keys in doors,
to provide people in need with a safe place to call home.

June 2023



Table of contents



This is an interactive document. Navigate to any section by clicking on the contents list. Use the forward and back arrows in the footer. Return to the Contents page by clicking the document title in the footer.

<u>Our commitment to Aboriginal families and Country</u>	3
<u>The purpose of local area analyses</u>	4
<u>We're innovating housing to deliver more keys in doors</u>	5
<u>Why innovation is needed</u>	6
<u>How we're innovating housing</u>	7
<u>Our vision for the North Sydney LGA</u>	8
<u>We are one part of a continuum</u>	9
<u>Before and after</u>	10
<u>Overview of the LGA</u>	11
<u>Tenant and waitlist information</u>	12
<u>Dwelling priorities and plans</u>	13
<u>Planning context</u>	13
<u>Community housing providers</u>	14
<u>North Sydney social housing facts</u>	14
<u>More information</u>	16
<u>NSW Land and Housing Corporation – partnering information and contacts</u>	17

Our commitment to Aboriginal families and Country

NSW Land and Housing Corporation acknowledges that we all stand on Aboriginal land.

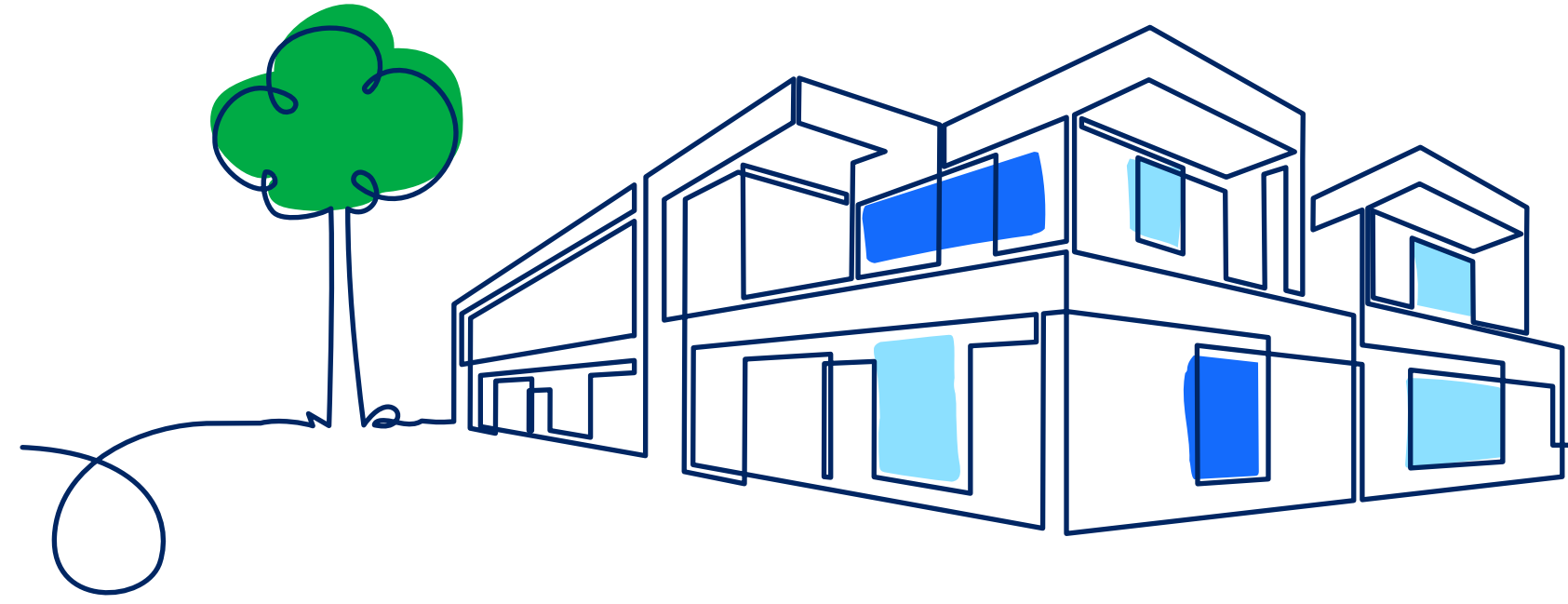
We acknowledge the Traditional Custodians of the land on which we live and work and pay our respect to Elders past, present and emerging.

We acknowledge this by demonstrating our ongoing commitment to building and sharing housing and communities where Aboriginal families are included socially, culturally and economically.

In delivering the local area analysis we will:

- show respect
- collaborate
- implement the principles of the Department of Planning, Industry and Environment's [Aboriginal Outcomes Strategy 2020–23](#) (PDF 3.45 MB)
- support the objectives of the [NSW Aboriginal Housing Strategy, Strong Family, Strong Communities 2018–28](#).





The purpose of local area analyses

The purpose of a local area analysis is to deliver on the long-term vision set out in the NSW Land and Housing Corporation's Portfolio Strategy.

The local area analysis is a place-based approach, providing a framework and direction to better understand:

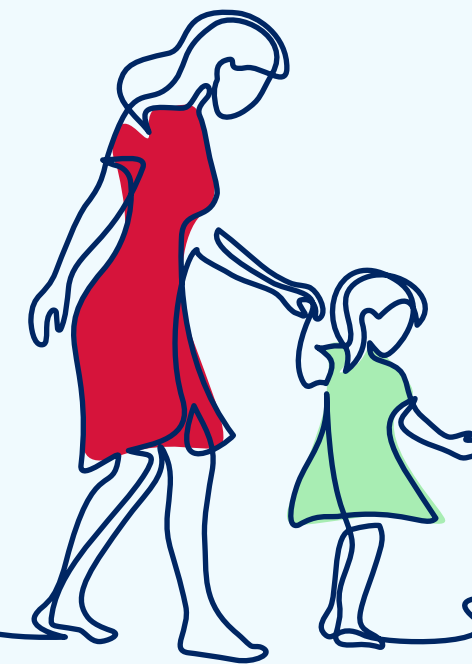
- what stock we have
- where stock is located
- the stock condition
- what opportunities are available for redevelopment.

It seeks to provide the link between the NSW Government's objectives for social housing, more localised planning and development decision-making, and opportunities for partnerships with councils, industry and the community housing sector.

The views of all our stakeholders are important to us and NSW Land and Housing Corporation is committed to continuing collaboration with our stakeholders and the community.

For details on current projects in your LGA, please visit our website.

We're innovating housing to deliver more keys in doors



At NSW Land and Housing Corporation, our role is to actively grow and manage the supply of the right types of housing, at the right time, in the right areas, for people in need in our communities.

We're innovating to deliver more keys in doors and give more people in need a safe place to call home.

Our work supports the government's priority to reduce street homelessness. We work in every corner of our state, from regional NSW to the diverse metropolitan suburbs of Sydney, Newcastle and the Illawarra. Beyond the housing we deliver and maintain, our activities also create jobs and stimulate local economies.

Why innovation is needed

We are growing and changing our portfolio to meet the needs of current and future tenants, providing the type of housing that is right for them, at the right time, in the right areas.

The purpose of social housing has changed significantly.

- In the 1960s, wages were the main source of income for 85% of tenants – now it accounts for just 7%.

- In the 1970s, 70% of tenants were couples with children – now they represent just 4%.
- In 2001, about half of new entrants to social housing had complex needs, now it is about two-thirds.

Delivering social housing is much more than providing people with a roof over their head. Having a safe place to call home supports people to pursue health, education and employment

opportunities, allowing them to thrive and strengthen our communities.

Today, housing is a safety net for people in need who can't otherwise afford to house themselves. The high demand for social, crisis, transitional and affordable housing continues to outstrip supply. Most tenants are older, past working age and live alone – 93% rely on the age, disability or another pension for income.



Figure 1. The changing purpose of social housing.

How we're innovating housing

We're innovating by building relationships to fund the development of even more properties.

We create opportunities to collaborate with government and the Aboriginal Housing Office, and partner with industry, developers and community housing providers. This lets us use our collective strengths to innovate and accelerate a sustainable supply of housing.

We're also using data to better understand the needs of the people and families we assist, to design and deliver housing that is right for them.

The local area analyses are one of the ways we're using data, so that we can better understand the opportunities in our portfolio and plan for the future.



Figure 2. How NSW Land and Housing Corporation is innovating housing.

Our vision for the North Sydney LGA



The NSW Government is committed to delivering more and better social homes and supporting the NSW economy and jobs through housing construction and manufacturing across the state.

There are more than 525 social homes owned by the NSW Land and Housing Corporation in the North Sydney LGA. LAHC's vision for social housing in the North Sydney LGA includes delivering homes to better meet tenants' needs, located near shops, transport, services and jobs.

Renewal and deconcentration is a long-term objective. Our focus is on renewing under-developed land and increasing the number of homes. We will also 'recycle' assets that are not near transport and other amenities, or are not well located, so not in the best interests of our tenants. We will reinvest locally into areas of high demand and need.

As we renew and redevelop, more of our homes will be right type, in the right areas, and fit seamlessly into streetscapes.

What is deconcentration?

In the context of social housing, deconcentration is taking a strategic, innovative view to revitalise older areas. This requires a 'mixed tenure' model of planning and delivery for new housing. Mixed tenure describes an outcome where social, affordable and private housing is seamlessly integrated within a development or a neighbourhood.

We are one part of a continuum

To deliver on our vision for social housing, takes time, careful consideration, consultation, and collaboration.

So we're partnering more, and more often, with all stakeholders, and drawing on our collective strengths, to increase and accelerate supply.

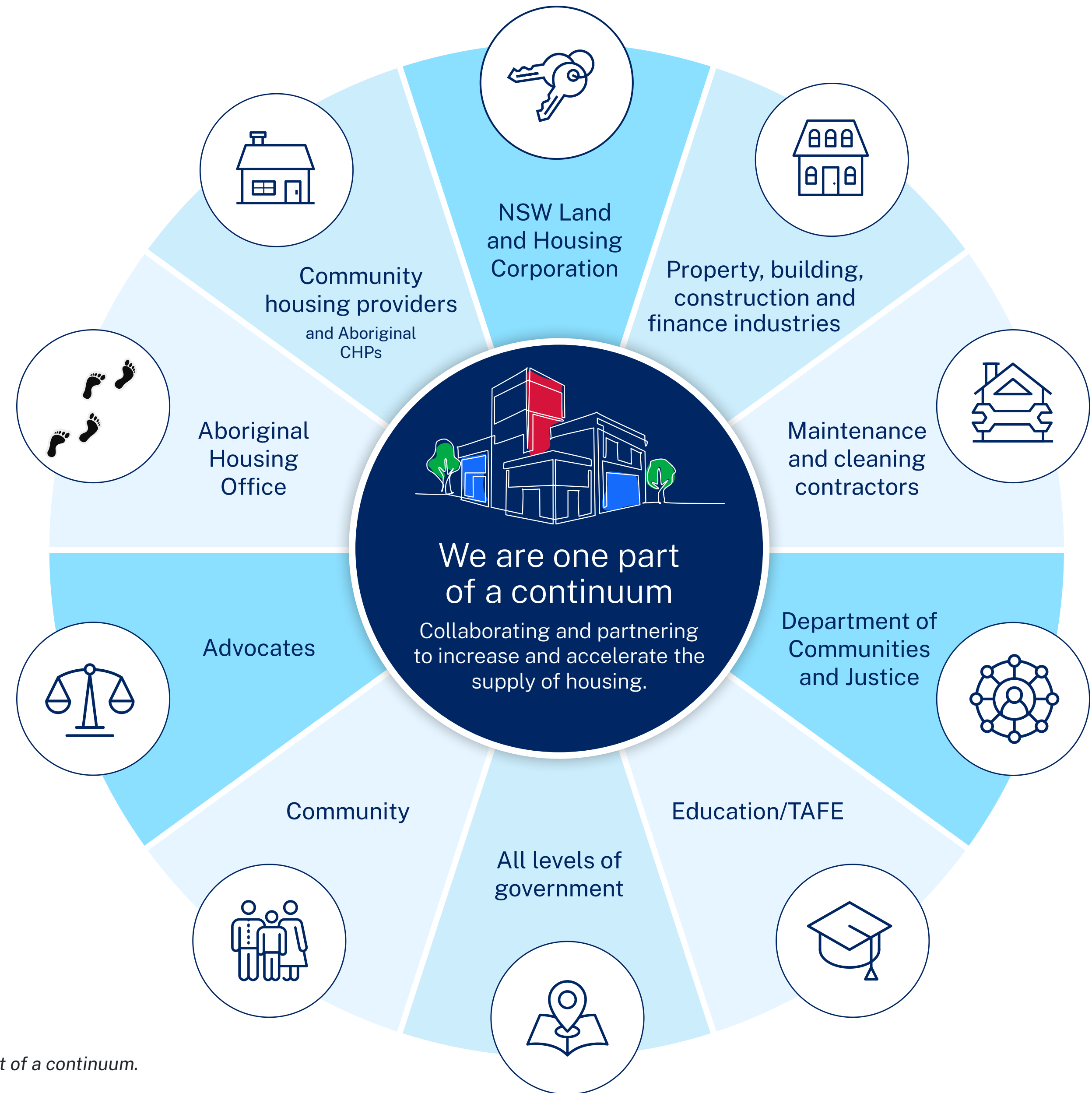


Figure 3. We are one part of a continuum.

North Sydney LGA

Before and after



Before



After *Example of a completed LAHC development – safe, well designed and appropriate*

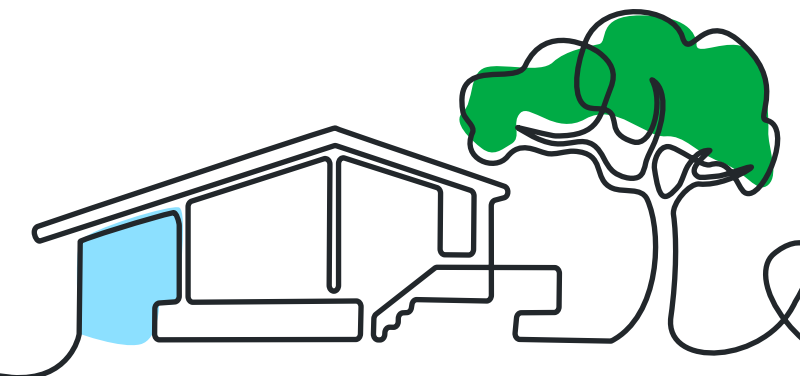
Overview of the LGA

North Sydney is located in Sydney's inner northern suburbs, approximately 3km from the CBD.

North Sydney encompasses a total land area of 11 square kilometres, comprising both residential and commercial areas.

North Sydney features:

- one private hospital – the Mater Hospital
- 5 railway stations and public and private bus networks access to major roads including Bradfield Highway, the Pacific Highway and Warringah Freeway
- tertiary education providers include Australian Catholic University (North Sydney – MacKillop Campus), The Northern Sydney Institute (Crows Nest Campus) and TAFE NSW Northern Sydney Institute (Bradfield Senior College)
- numerous primary and secondary schools.



Tenant and waitlist information

In North Sydney LGA, despite there being a large supply of 0-1-bedroom social housing dwellings, the current demand remains highest for smaller households and families on the waitlist.

There is high demand for smaller 0-1-bedroom dwellings for existing tenants and households on the waitlist.

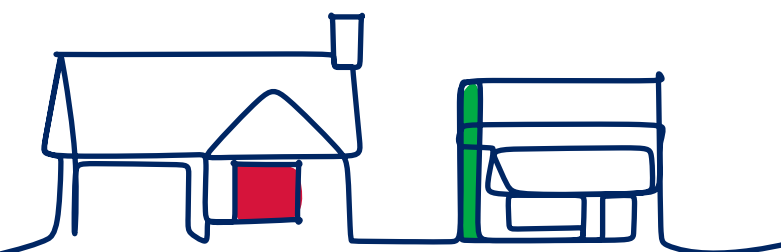


Across NSW

- 78% of the priority waitlist is for dwellings with up to 2-bedrooms. The current portfolio, however, is 42% dwellings with 3 or more bedrooms.
- 59% of current tenants are single-person households, of which 19.5% are housed in dwellings with 3 or more bedrooms.
- 81% of current tenants are eligible for senior housing (including tenants receiving age pension and disability pension/carer pension) would benefit from seniors living developments, which is housing built to meet the needs of older people or people with disability.

What is under-occupancy?

Under-occupancy describes a situation where one or 2 people, perhaps having raised their family, remain in a 3-bedroom house. We are working on ways to address under-occupancy, so that people in need are in the right types of housing, at the right time, in the right areas.



Dwelling priorities and plans

We are prioritising building 1- and 2-bedroom dwellings that are well located close to transport and other amenities. A proportion of these will be seniors living and other forms of accessible dwellings.

You can see our [current projects in North Sydney LGA and across NSW](#).



Planning context

North Sydney's Local Strategic Planning Statement (LSPS) is committed to collaborate with partnerships to help strengthen and further deliver affordable housing. The Strategy recognises the current limited diversity and access to social housing and includes actions to investigate opportunities for social housing.

The North Sydney Local Housing Strategy advocates this need for affordable housing and suggest joint ventures with state government and community housing providers to deliver a mix of affordable housing near public transport and services in the LGA under its local infrastructure contributions.

LEP amendments are soon expected following the release of key strategic documents. This

presents an opportunity for LAHC to engage with council for discussions around the outcomes for the relevant planning provisions.

4% of LAHC properties in North Sydney LGA are zoned R3 permitting attached dwellings, boarding houses, community facilities, dual occupancies, dwelling houses, group homes, multi dwelling housing, semidetached housing and seniors housing.

84% of LAHC properties in North Sydney LGA are zoned R4 permitting boarding houses, dwelling houses, group homes, multi dwelling housing and residential flat buildings.

Read more about [Council's strategic planning](#).



Community housing providers

Almost all the dwellings owned by NSW Land and Housing Corporation in North Sydney LGA are managed by community housing providers (including, Link Wentworth Housing Limited, St George Community Housing Limited, Women’s Housing Company Ltd).

What is a community housing provider?

Community housing providers are not-for-profit organisations that build and/or manage housing for eligible people who cannot access appropriate housing in the private market, as they usually have very low, low and moderate incomes. The Registrar of Community Housing regulates the community housing sector in NSW.

For more information, please visit the [CHIA NSW website](#).



North Sydney social housing facts

Key facts	NSW Land and Housing Corporation	LGA	Greater Sydney	NSW
Total population	645 (0.9% of LGA)	68,950	1.3%	0.9%
Total dwellings	538 (1.4% of LGA)	38,990	2,076,239	3,357,790
Adjoining LGAs	Lane Cove, Mosman and Willoughby			

Table 1: Comparing the North Sydney LGA with Sydney and New South Wales.

^Based on the average household size of LAHC owned, DCJ Managed dwellings across Greater Sydney

What is the Social Housing Management Transfer (SHMT) Program?

The SHMT Program is the transfer of management of around 14,000 social housing properties from the Department of Communities and Justice (DCJ) to community housing providers (CHPs) in certain locations across NSW.

Further information about the SHMT Program can be found [here](#).

Most of NSW Land and Housing Corporation's housing in the North Sydney LGA comprises of units built in the 1970s and 1980s. This was for a different time with different needs. Today, property maintenance costs are increasing (due to the age of the assets), so these properties are becoming less and less suitable, both for the tenants who live in them and for us to manage cost-effectively.

Age of social housing properties in North Sydney

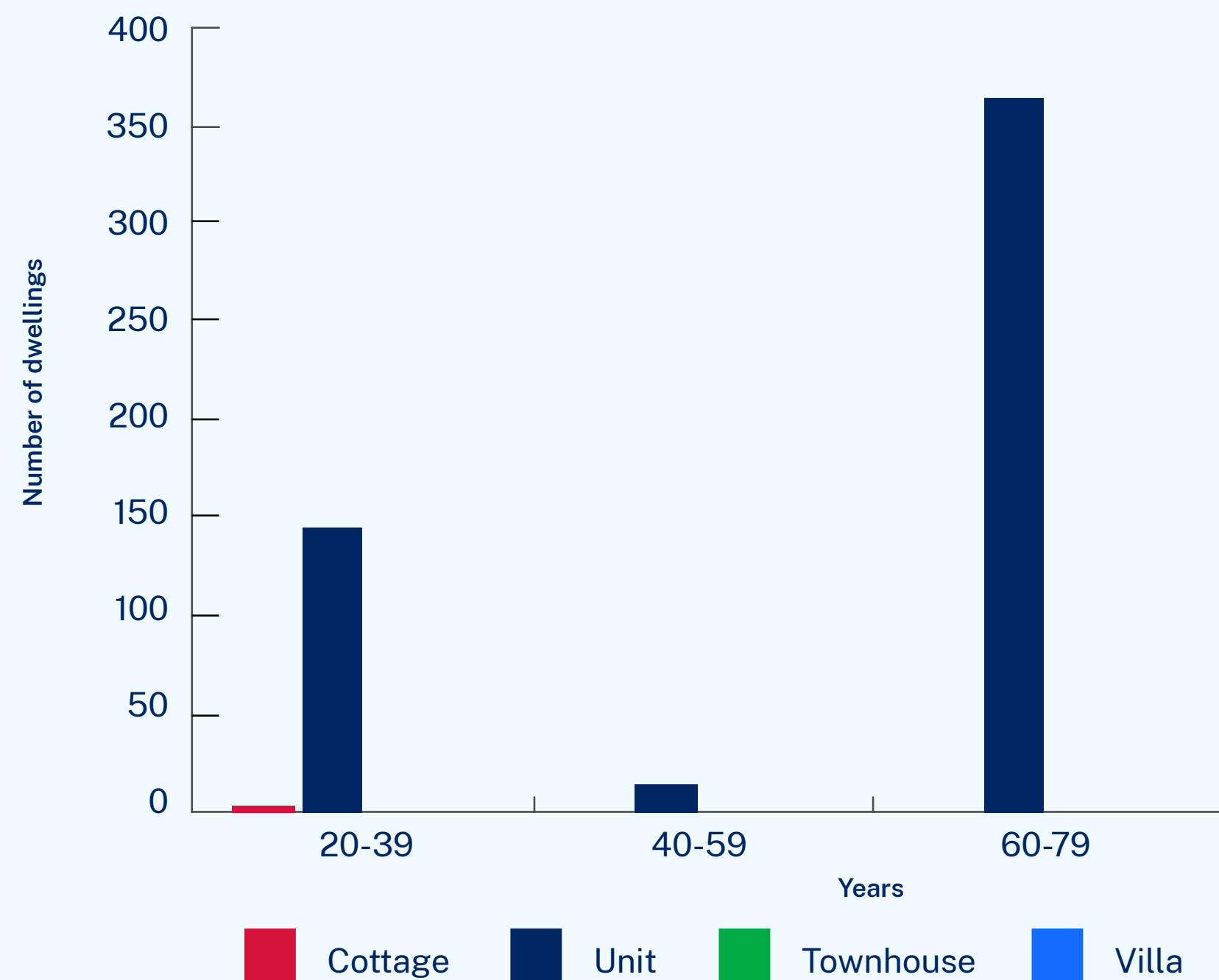


Figure 4. Age of NSW Land and Housing Corporation dwellings in the North Sydney LGA.

Social housing is a safety net, as most tenants are older, past working age, live alone and rely on the age, disability or some other pension for income. The majority of existing dwellings in North Sydney are 0-1-bedroom. The greatest demand, however, remains for smaller dwellings for one or 2 people, and we are addressing this need.

Types of properties available in North Sydney compared with waitlist

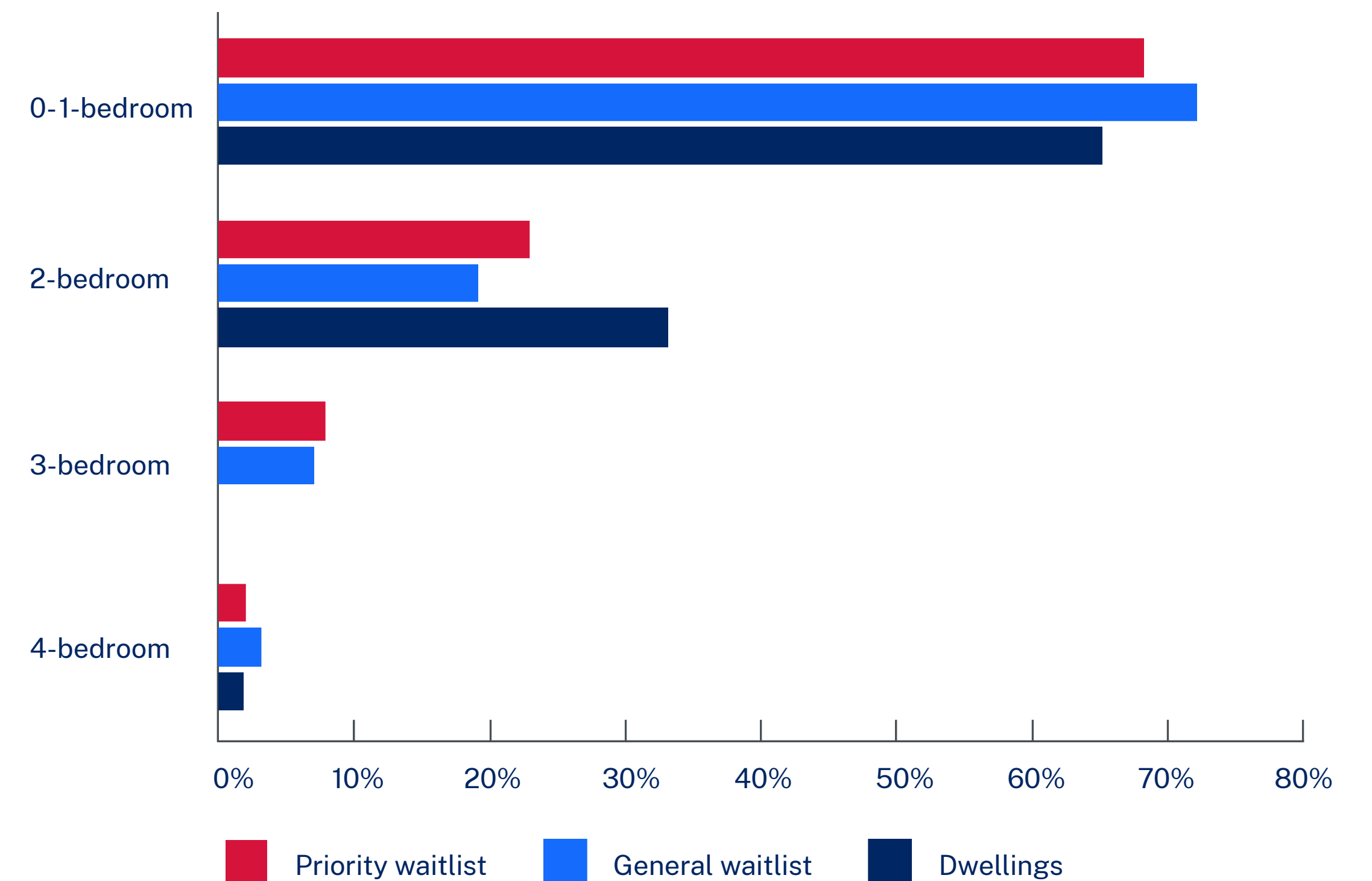
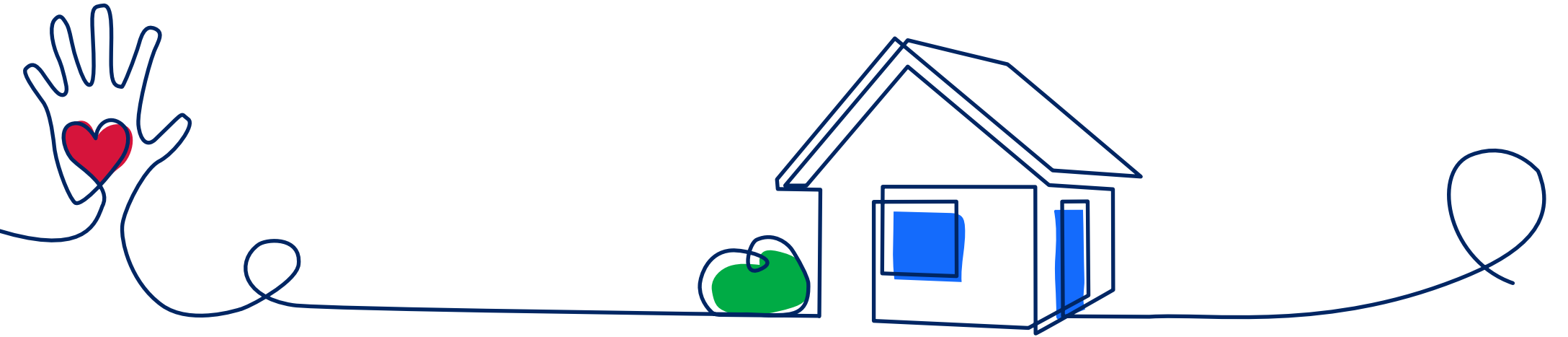


Figure 5. Types of dwellings available in the North Sydney LGA, compared to the waitlist. Priority waitlist refers to applicants who have been assessed as having an urgent need for social housing.

More information



NSW Land and Housing Corporation's purpose is to actively grow and manage the largest social housing portfolio in Australia.

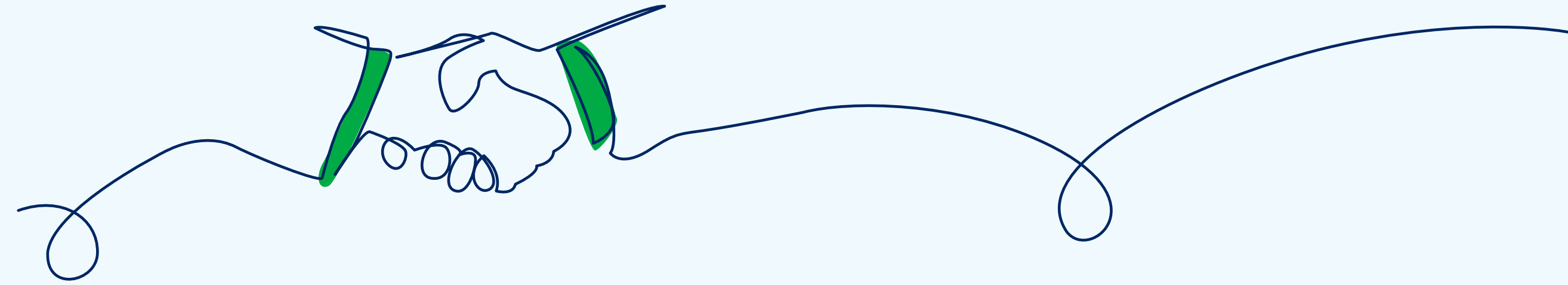
Delivering housing is much more than providing people with a roof over their head. Having access to safe housing assists people to pursue health, education and employment opportunities, allowing them to thrive and strengthen the communities where we live.

Our vision is to be an industry leader in providing well-designed social housing that is affordable, safe, well-located and adequately maintained – facilitating better quality of life outcomes for residents and neighbourhoods.

There are many views about how to best deliver social housing for the people of NSW. We welcome collaboration from our key stakeholders, including councils, community housing providers, tenants, private industry and the broader community.

If you would like to know more about the important work we are doing in your LGA, [visit our newsletter page](#) to subscribe for regular updates. We welcome all stakeholders and look forward to collaborative partnerships that will see an increase in and acceleration of the supply of the right types of housing, in the right areas, at the right time, for people in need.

NSW Land and Housing Corporation – partnering information and contacts



Access further information by clicking on the links below

[NSW Land and Housing Corporation current redevelopments](#)

[NSW Land and Housing Corporation Portfolio Strategy](#)

[NSW Land and Housing Corporation Community Housing Provider redevelopment policies](#)

[NSW Land and Housing Corporation Sales Policy](#)

[NSW Land and Housing Corporation Good Design for Social Housing](#)

[NSW Housing Strategy 2041](#)

[Department of Premier and Cabinet's Unsolicited Proposal Framework \(PDF 777 KB\)](#)

Contact

[NSW Land and Housing Corporation](#)

If you need housing, the [Department of Communities and Justice](#) can help.

Call ☎ [1800 422 322](#)

References:

- LAHC –NSW Land and Housing Corporation (September 2022)
- ABS –Australian Bureau of Statistics (2016)
- DPIE –Department of Planning, Industry and Environment (June 2021)
- DCJ –Department of Communities and Justice (December 2020)
- CoreLogic (June 2021)

Published by NSW Land and Housing Corporation

First published: June 2023

Department reference number: D21/1857922

For more information and to contact us, visit

www.dpie.nsw.gov.au/land-and-housing-corporation

© State of New South Wales through NSW Land and Housing Corporation, Department of Planning, Industry and Environment 2023. Information contained in this publication is based on knowledge and understanding at the time of writing (June 2023) and is subject to change. For more information, please visit www.dpie.nsw.gov.au/copyright

The State of New South Wales (including NSW Land and Housing Corporation and the Department of Planning, Industry and Environment), the author and the publisher take no responsibility, and will accept no liability, for the accuracy, currency, reliability or correctness of any information included in the document (including material provided by third parties). Readers should make their own inquiries and rely on their own advice when making decisions related to material contained in this publication.

COVER IMAGE: Example of a completed LAHC development – safe, well designed and appropriate

