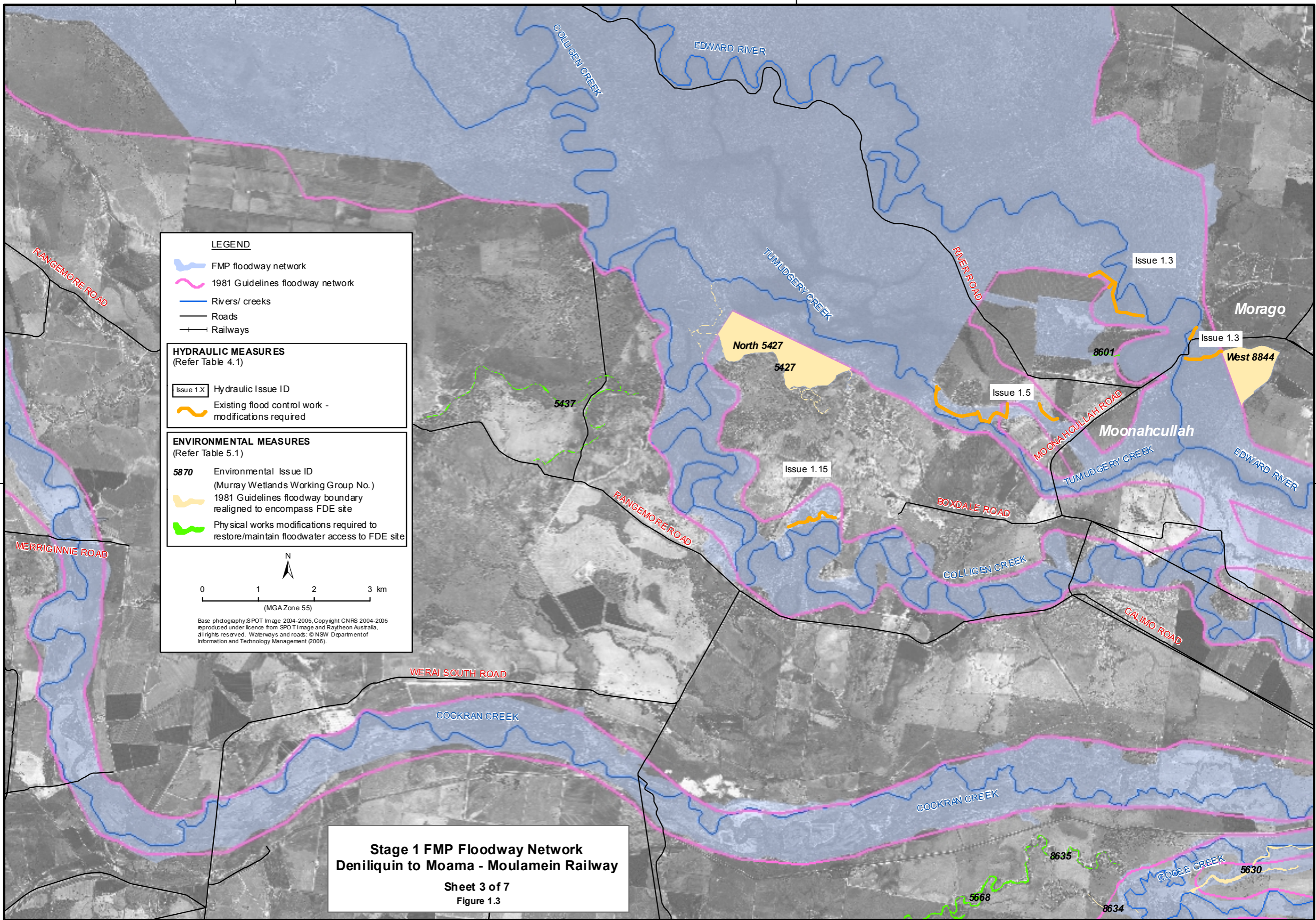


270000

280000



**LEGEND**

- FMP floodway network
- 1981 Guidelines floodway network
- Rivers/ creeks
- Roads
- Railways

**HYDRAULIC MEASURES**  
(Refer Table 4.1)

- Issue 1 X Hydraulic Issue ID
- Existing flood control work - modifications required

**ENVIRONMENTAL MEASURES**  
(Refer Table 5.1)

- 5870 Environmental Issue ID (Murray Wetlands Working Group No.)
- 1981 Guidelines floodway boundary realigned to encompass FDE site
- Physical works modifications required to restore/maintain floodwater access to FDE site

0 1 2 3 km  
(MGA Zone 55)

Base photography SPOT Image 2004-2005. Copyright CNRS 2004-2005 reproduced under licence from SPO T I Image and Raytheon Australia. All rights reserved. Waterways and roads: © NSW Department of Information and Technology Management (2006).

**Stage 1 FMP Floodway Network**  
Deniliquin to Moama - Moulamein Railway

Sheet 3 of 7  
Figure 1.3

270000

280000