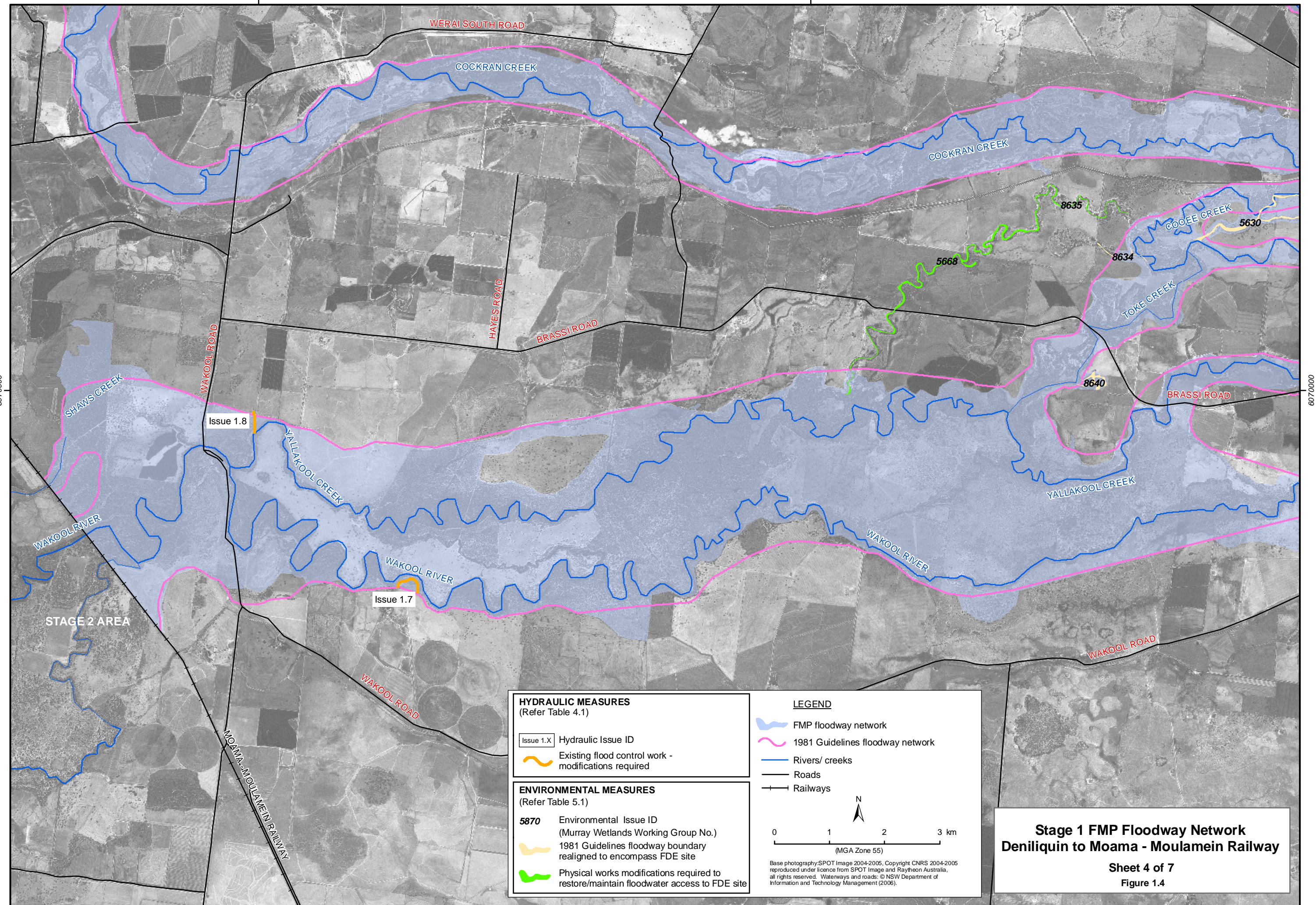


270000

280000



6070000

6070000

270000

280000

HYDRAULIC MEASURES
(Refer Table 4.1)

Issue 1.X Hydraulic Issue ID

Existing flood control work - modifications required

ENVIRONMENTAL MEASURES
(Refer Table 5.1)

5870 Environmental Issue ID (Murray Wetlands Working Group No.)

1981 Guidelines floodway boundary realigned to encompass FDE site

Physical works modifications required to restore/maintain floodwater access to FDE site

LEGEND

- FMP floodway network
- 1981 Guidelines floodway network
- Rivers/ creeks
- Roads
- Railways

0 1 2 3 km
(MGA Zone 55)

Base photography: SPOT Image 2004-2005, Copyright CNRS 2004-2005 reproduced under licence from SPOT Image and Raytheon Australia, all rights reserved. Waterways and roads: © NSW Department of Information and Technology Management (2006).

**Stage 1 FMP Floodway Network
Deniliquin to Moama - Moulamein Railway**

Sheet 4 of 7
Figure 1.4