

240000

250000

6060000

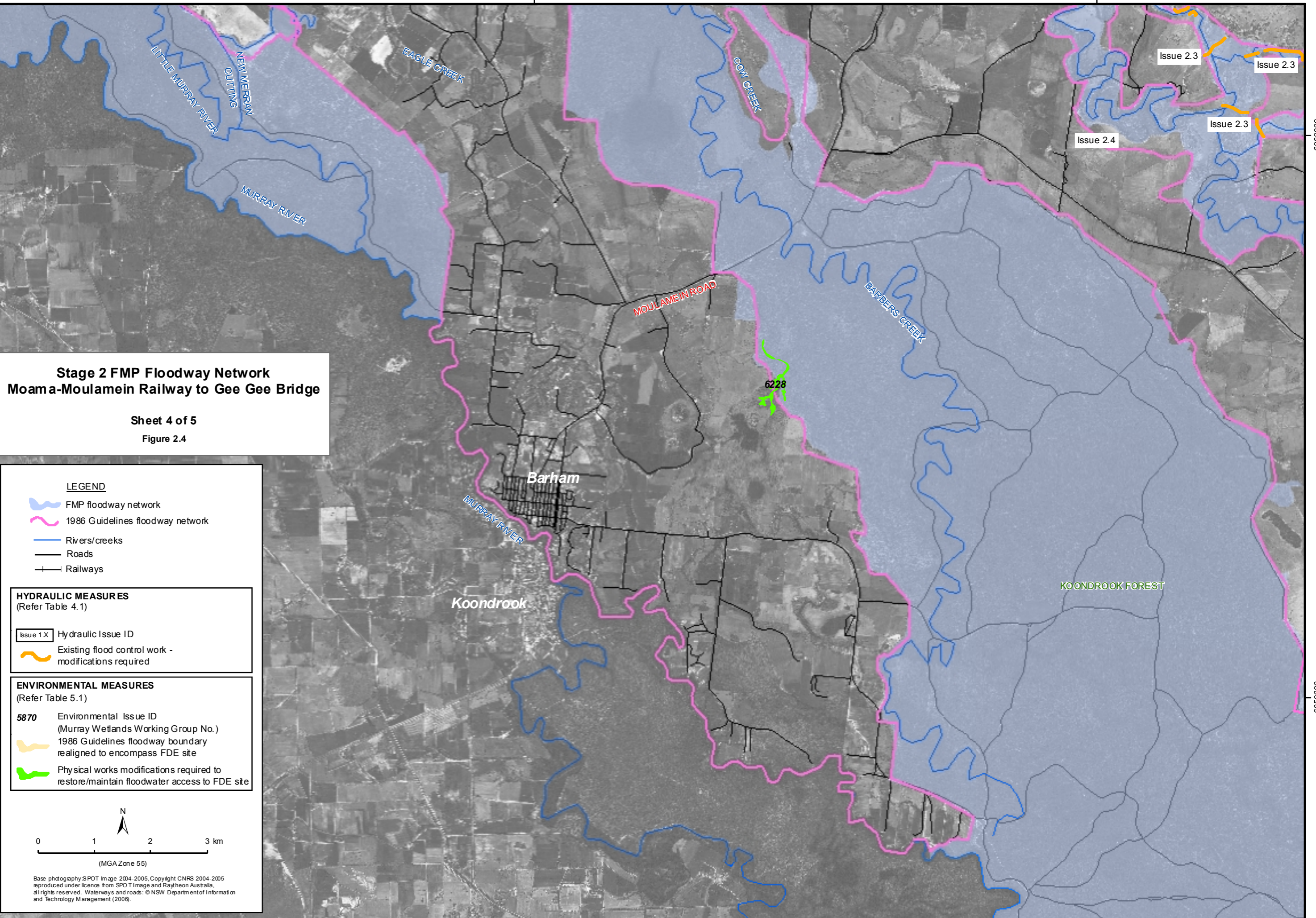
6060000

6050000

6050000

240000

250000



**Stage 2 FMP Floodway Network**  
**Moama-Moulamein Railway to Gee Gee Bridge**

Sheet 4 of 5  
 Figure 2.4

**LEGEND**

- FMP floodway network
- 1986 Guidelines floodway network
- Rivers/creeks
- Roads
- Railways

**HYDRAULIC MEASURES**  
 (Refer Table 4.1)

- Hydraulic Issue ID
- Existing flood control work - modifications required

**ENVIRONMENTAL MEASURES**  
 (Refer Table 5.1)

- 5870 Environmental Issue ID (Murray Wetlands Working Group No.)
- 1986 Guidelines floodway boundary realigned to encompass FDE site
- Physical works modifications required to restore/maintain floodwater access to FDE site

N

0 1 2 3 km

(MGA Zone 55)

Base photography SPOT Image 2004-2005, Copyright CNRS 2004-2005 reproduced under licence from SPOT Image and Raytheon Australia, all rights reserved. Waterways and roads: © NSW Department of Information and Technology Management (2006).