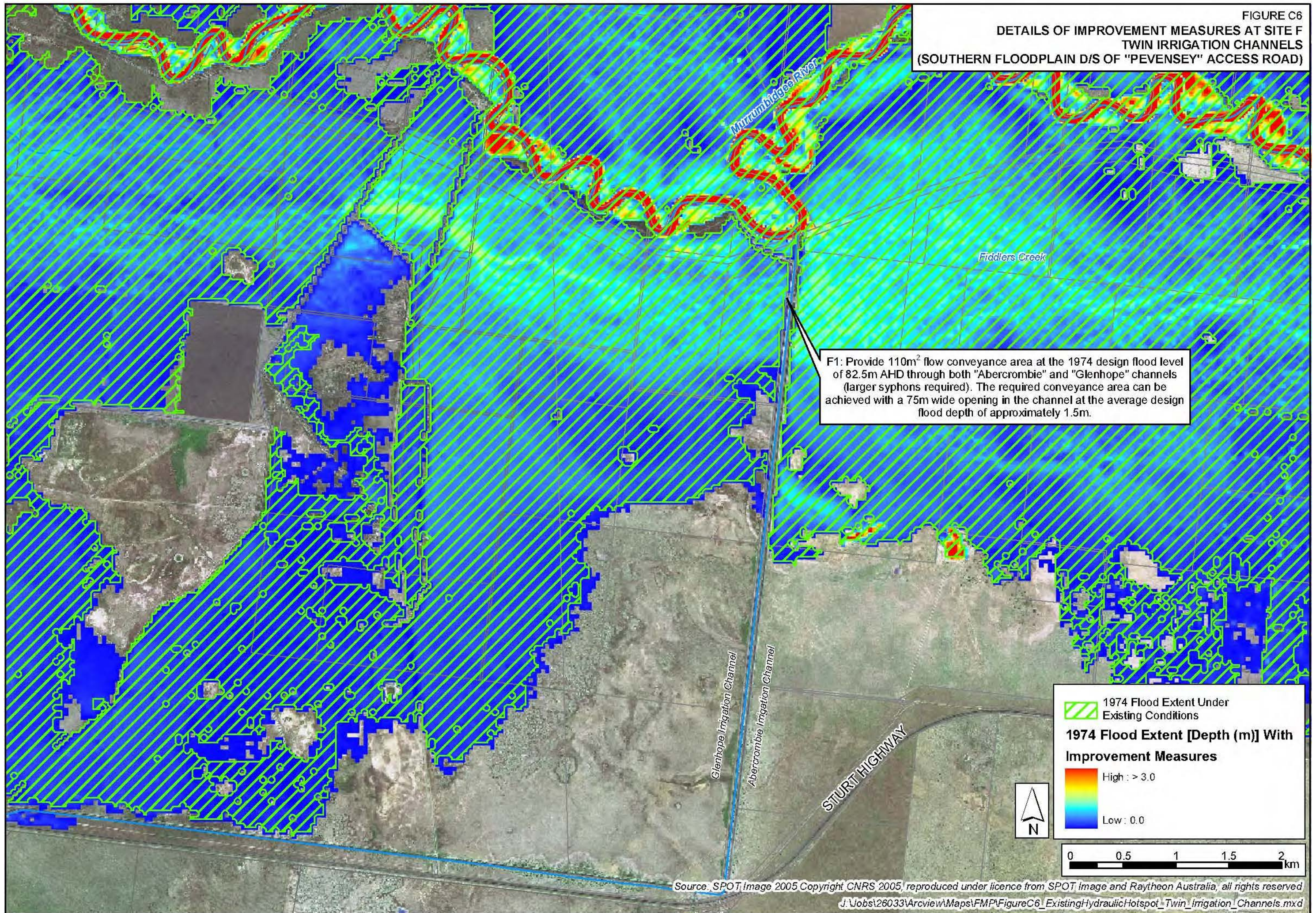
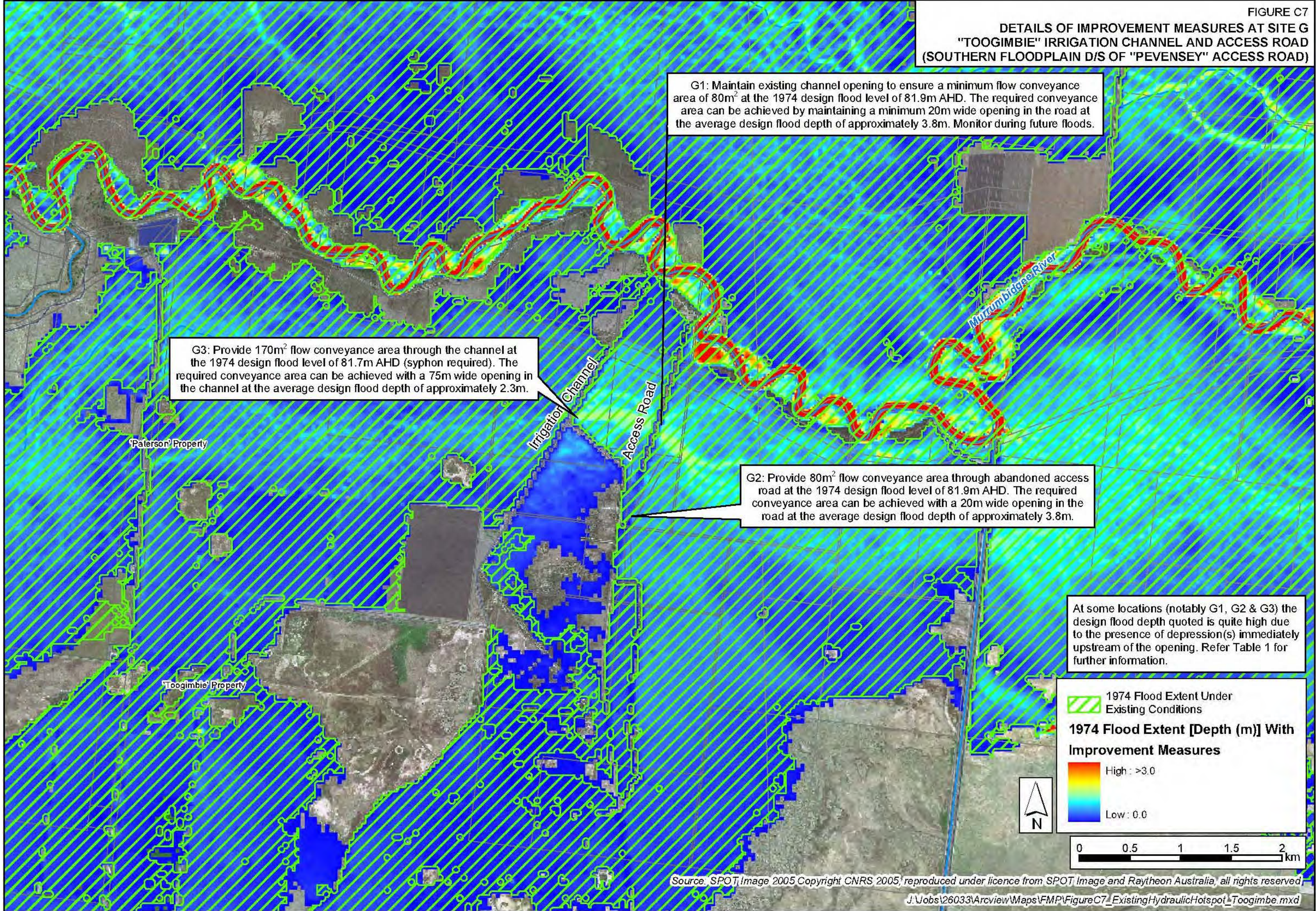


FIGURE C6
 DETAILS OF IMPROVEMENT MEASURES AT SITE F
 TWIN IRRIGATION CHANNELS
 (SOUTHERN FLOODPLAIN D/S OF "PEVENSEY" ACCESS ROAD)



DETAILS OF IMPROVEMENT MEASURES AT SITE G
 "TOOGIMBIE" IRRIGATION CHANNEL AND ACCESS ROAD
 (SOUTHERN FLOODPLAIN D/S OF "PEVENSEY" ACCESS ROAD)



G1: Maintain existing channel opening to ensure a minimum flow conveyance area of 80m² at the 1974 design flood level of 81.9m AHD. The required conveyance area can be achieved by maintaining a minimum 20m wide opening in the road at the average design flood depth of approximately 3.8m. Monitor during future floods.

G3: Provide 170m² flow conveyance area through the channel at the 1974 design flood level of 81.7m AHD (syphon required). The required conveyance area can be achieved with a 75m wide opening in the channel at the average design flood depth of approximately 2.3m.

G2: Provide 80m² flow conveyance area through abandoned access road at the 1974 design flood level of 81.9m AHD. The required conveyance area can be achieved with a 20m wide opening in the road at the average design flood depth of approximately 3.8m.

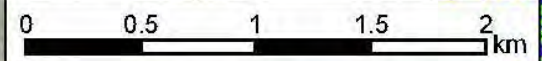
At some locations (notably G1, G2 & G3) the design flood depth quoted is quite high due to the presence of depression(s) immediately upstream of the opening. Refer Table 1 for further information.

1974 Flood Extent Under Existing Conditions

1974 Flood Extent [Depth (m)] With Improvement Measures

High : >3.0

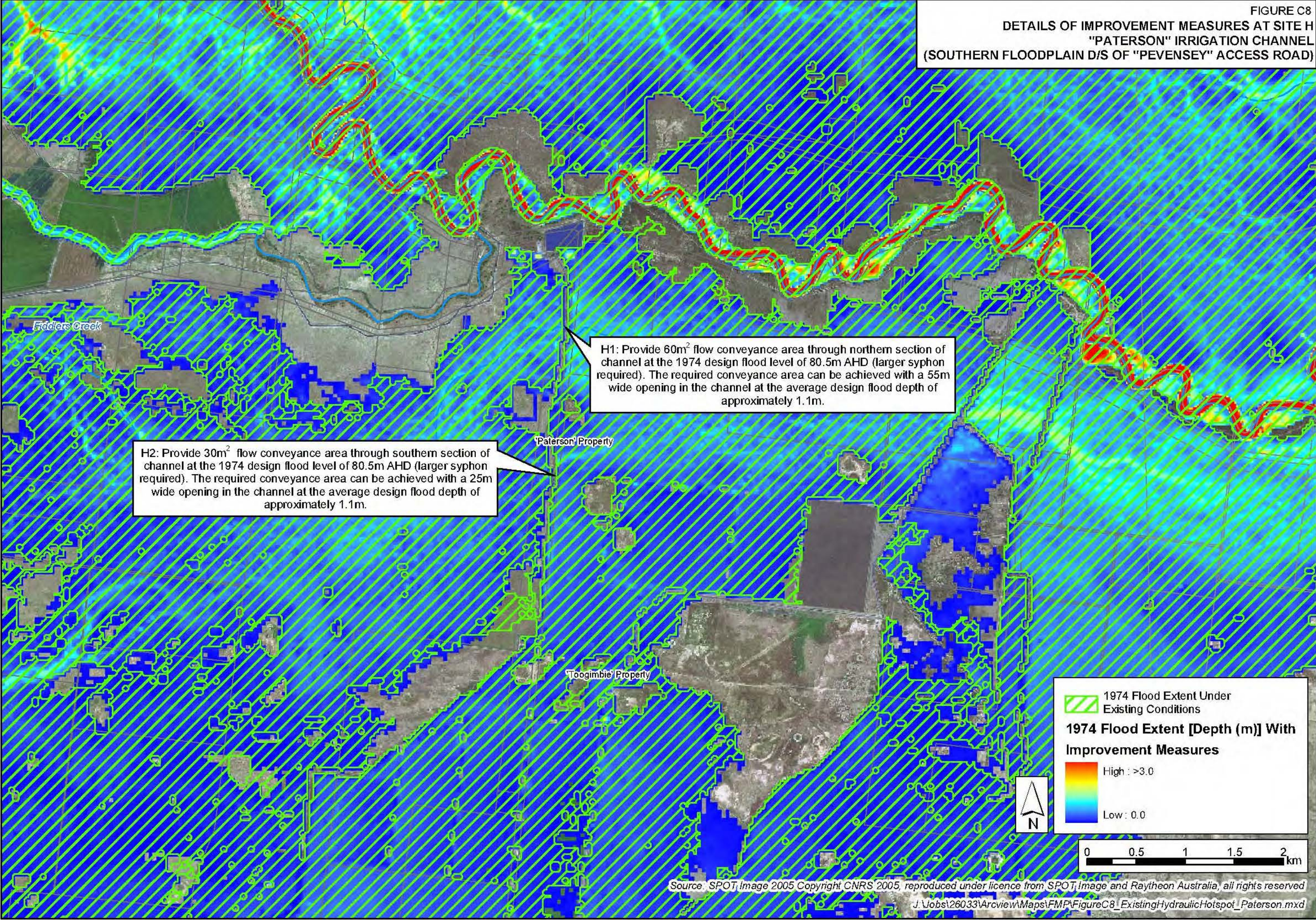
Low : 0.0



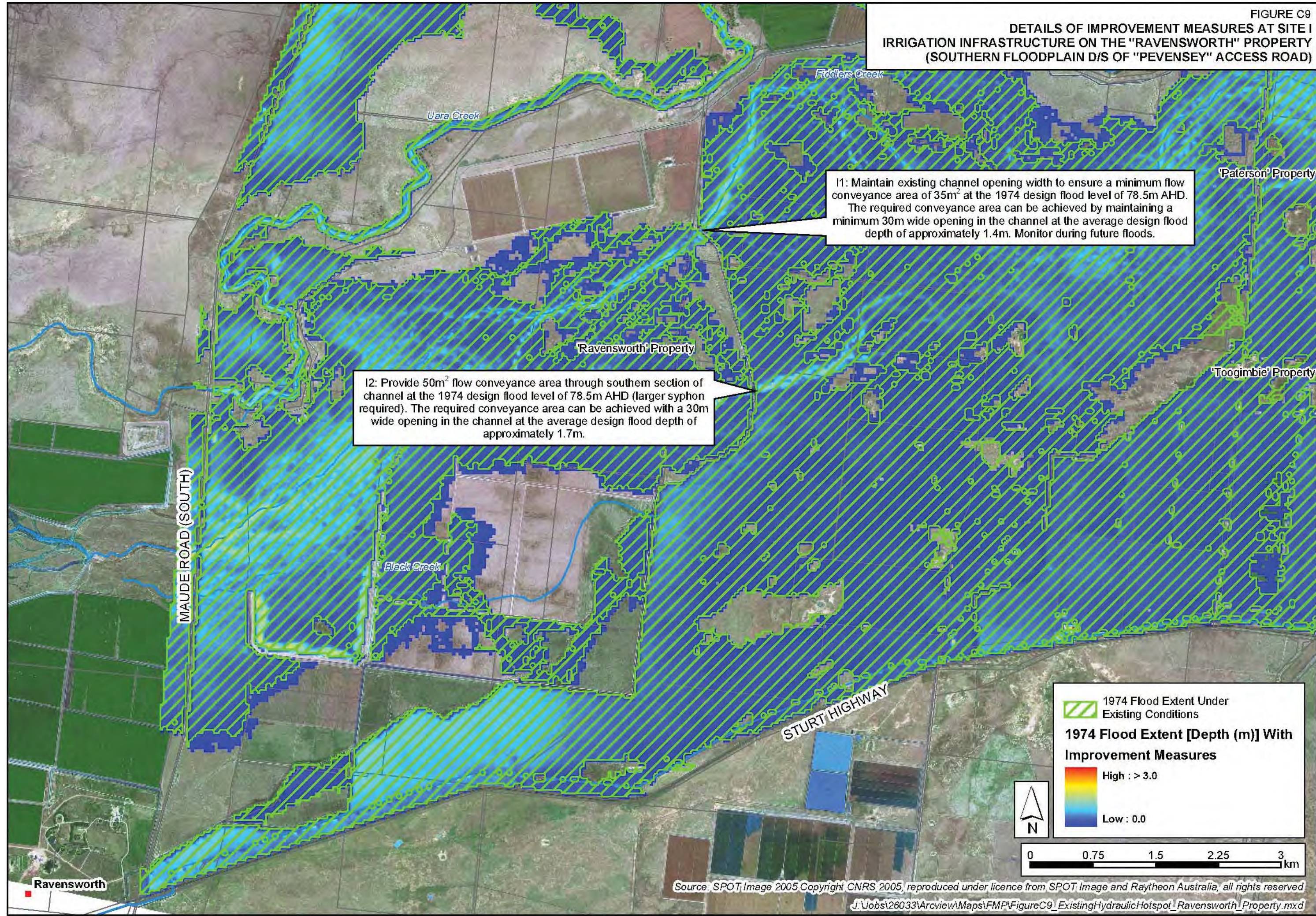
Source: SPOT Image 2005 Copyright CNRS 2005, reproduced under licence from SPOT Image and Raytheon Australia, all rights reserved

J:\Jobs\26033\Arcview\Maps\FMP\FigureC7_ExistingHydraulicHotspot_Toogimbe.mxd

DETAILS OF IMPROVEMENT MEASURES AT SITE H
"PATERSON" IRRIGATION CHANNEL
(SOUTHERN FLOODPLAIN D/S OF "PEVENSEY" ACCESS ROAD)



DETAILS OF IMPROVEMENT MEASURES AT SITE I
IRRIGATION INFRASTRUCTURE ON THE "RAVENSWORTH" PROPERTY
(SOUTHERN FLOODPLAIN D/S OF "PEVENSEY" ACCESS ROAD)



Source: SPOT Image 2005 Copyright CNRS 2005, reproduced under licence from SPOT Image and Raytheon Australia, all rights reserved
J:\Jobs\26033\Arcview\Maps\FMP\FigureC9_ExistingHydraulicHotspot_Ravensworth_Property.mxd

FIGURE C10
DETAILS OF IMPROVEMENT MEASURES AT SITE J
BUDGEE CREEK AREA

J1: Monitor impact of in-stream embankments on flow distribution and fish passage during floods up to the 20 year ARI event.

