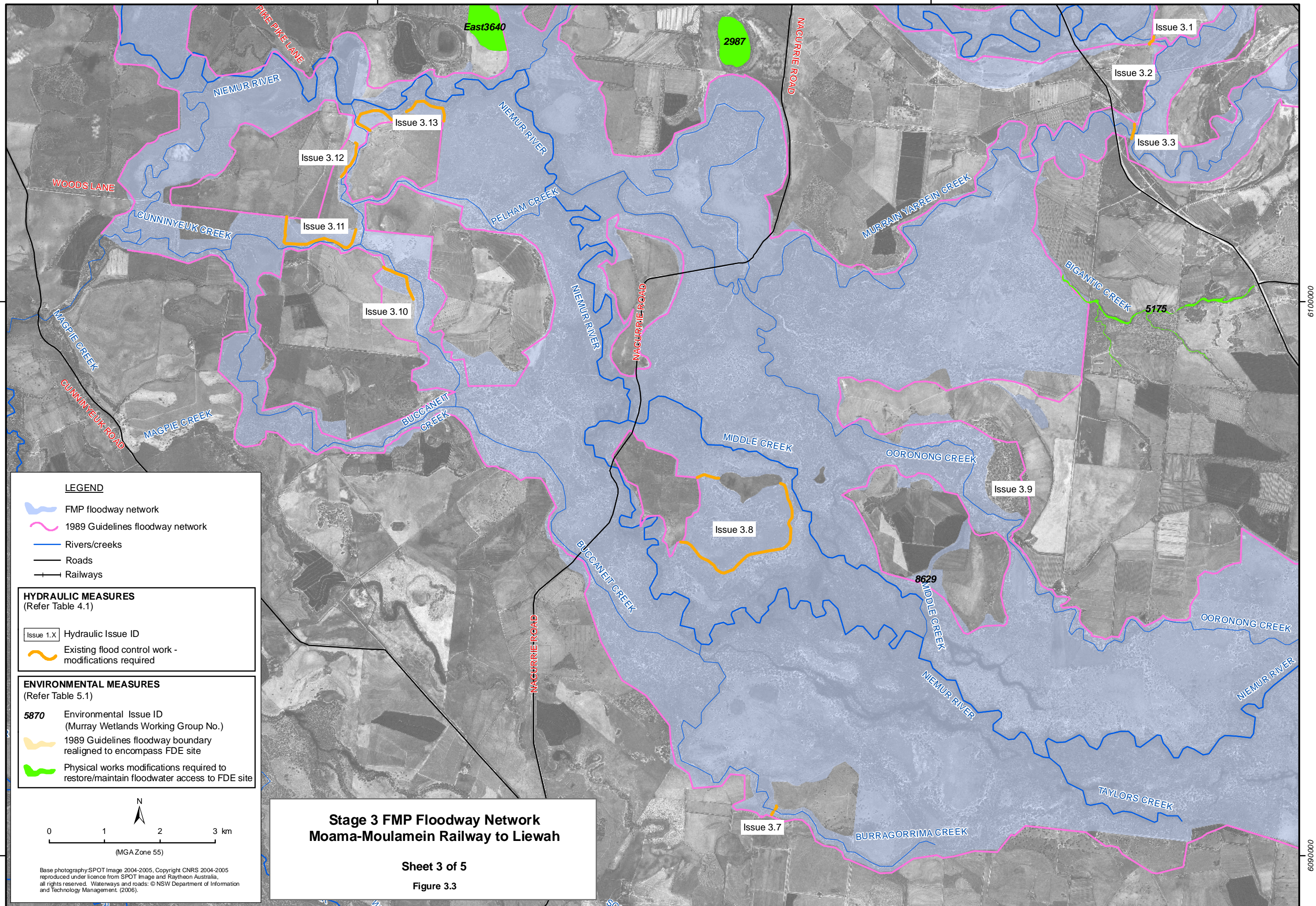


220000

230000



LEGEND

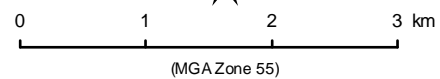
- FMP floodway network
- 1989 Guidelines floodway network
- Rivers/creeks
- Roads
- Railways

HYDRAULIC MEASURES
(Refer Table 4.1)

- Hydraulic Issue ID
- Existing flood control work - modifications required

ENVIRONMENTAL MEASURES
(Refer Table 5.1)

- 5870** Environmental Issue ID (Murray Wetlands Working Group No.)
- 1989 Guidelines floodway boundary realigned to encompass FDE site
- Physical works modifications required to restore/maintain floodwater access to FDE site



Base photography: SPOT Image 2004-2005, Copyright CNRS 2004-2005 reproduced under licence from SPOT Image and Raytheon Australia, all rights reserved. Waterways and roads: © NSW Department of Information and Technology Management, (2006).

**Stage 3 FMP Floodway Network
Moama-Moulamein Railway to Liewah**

Sheet 3 of 5
Figure 3.3

220000

230000

6100000

6100000

6090000

6090000